

Anti-XRCC2 antibody (211-260 aa) (STJ96283)

STJ96283

GENERAL INFORMATION

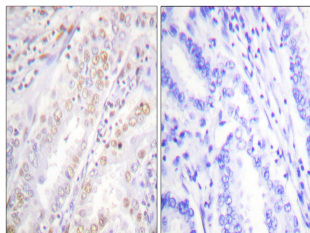
Product Type	Primary antibodies
Short Description	Rabbit polyclonal antibody anti-DNA repair protein XRCC2 (211-260 aa) is suitable for use in Western Blot, Immunohistochemistry, Immunofluorescence and ELISA research applications.
Applications	WB/IHC/IF/ELISA
Host/Source	Rabbit
Reactivity	Human/Rat/Mouse

PRODUCT PROPERTIES

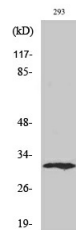
Clonality	Polyclonal
Clone ID	
Concentration	1 mg/mL
Conjugation	Unconjugated
Purification	The antibody was affinity-purified from rabbit antiserum by affinity-chromatography using epitope-specific immunogen.
Dilution Range	WB 1:500-1:2000 IHC 1:100-1:300 ELISA 1:10000 IF 1:50-200
Formulation	Liquid in PBS containing 50% Glycerol, 0.5% BSA and 0.02% Sodium Azide.
Isotype	IgG
Storage Instruction	Store at -20°C for up to 1 year from the date of receipt, and avoid repeat freeze-thaw cycles.

TARGET INFORMATION

Gene ID	7516
Gene Symbol	XRCC2
Uniprot ID	XRCC2_HUMAN
Immunogen	The antiserum was produced against synthesized peptide derived from the human XRCC2 at the amino acid range 211-260
Immunogen Region	211-260 aa
Specificity	XRCC2 Polyclonal Antibody detects endogenous levels of XRCC2 protein.
Immunogen Sequence	



Immunohistochemistry analysis of paraffin-embedded human lung carcinoma, using XRCC2 Antibody. The picture on the right is blocked with the synthesized peptide.



Western blot analysis of various cells using XRCC2 Polyclonal Antibody diluted at 1:10000. Secondary antibody was diluted at 1:20000 cells nucleus extracted by Minute TM Cytoplasmic and Nuclear Fractionation kit (SC-003, Inventiotech, MN, USA).