

Anti-APBA2 antibody (371-420 aa) (STJ96275)

STJ96275

GENERAL INFORMATION

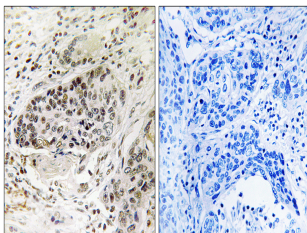
Product Type	Primary antibodies
Short Description	Rabbit polyclonal antibody anti-Amyloid-beta A4 precursor protein-binding family A member 2 (371-420 aa) is suitable for use in Immunohistochemistry, Immunofluorescence, Western Blot and ELISA research applications.
Applications	IHC/IF/WB/ELISA
Host/Source	Rabbit
Reactivity	Human/Mouse/Rat

PRODUCT PROPERTIES

Clonality	Polyclonal
Clone ID	
Concentration	1 mg/mL
Conjugation	Unconjugated
Purification	The antibody was affinity-purified from rabbit antiserum by affinity-chromatography using epitope-specific immunogen.
Dilution Range	WB 1:500-2000 IHC 1:100-1:300 ELISA 1:20000 IF 1:50-200
Formulation	Liquid in PBS containing 50% Glycerol, 0.5% BSA and 0.02% Sodium Azide.
Isotype	IgG
Storage Instruction	Store at -20°C for up to 1 year from the date of receipt, and avoid repeat freeze-thaw cycles.

TARGET INFORMATION

Gene ID	321
Gene Symbol	APBA2
Uniprot ID	APBA2_HUMAN
Immunogen	The antiserum was produced against synthesized peptide derived from the human APBA2 at the amino acid range 371-420
Immunogen Region	371-420 aa
Specificity	X11 Beta Polyclonal Antibody detects endogenous levels of X11 Beta protein.
Immunogen Sequence	



Immunohistochemistry analysis of paraffin-embedded human lung carcinoma tissue, using APBA2 Antibody. The picture on the right is blocked with the synthesized peptide.