

Anti-WTAP antibody (321-370 aa) (STJ96273)

STJ96273

GENERAL INFORMATION

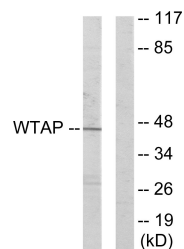
Product Type	Primary antibodies
Short Description	Rabbit polyclonal antibody anti-Pre-mRNA-splicing regulator WTAPD homologD (321-370 aa) is suitable for use in Western Blot, Immunohistochemistry, Immunofluorescence and ELISA research applications.
Applications	WB/IHC/IF/ELISA
Host/Source	Rabbit
Reactivity	Human/Mouse

PRODUCT PROPERTIES

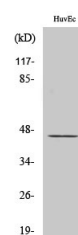
Clonality	Polyclonal
Clone ID	
Concentration	1 mg/mL
Conjugation	Unconjugated
Purification	The antibody was affinity-purified from rabbit antiserum by affinity-chromatography using epitope-specific immunogen.
Dilution	WB 1:500-1:2000
Range	IHC 1:100-1:300 ELISA 1:20000 IF 1:50-200
Formulation	Liquid in PBS containing 50% Glycerol, 0.5% BSA and 0.02% Sodium Azide.
Isotype	IgG
Storage Instruction	Store at -20°C for up to 1 year from the date of receipt, and avoid repeat freeze-thaw cycles.

TARGET INFORMATION

Gene ID	9589
Gene Symbol	WTAP
Uniprot ID	FL2D_HUMAN
Immunogen	The antiserum was produced against synthesized peptide derived from the human WTAP at the amino acid range 321-370
Immunogen Region	321-370 aa
Specificity	WTAP Polyclonal Antibody detects endogenous levels of WTAP protein.
Immunogen Sequence	



Western blot analysis of lysates from HUVEC cells, using WTAP Antibody. The lane on the right is blocked with the synthesized peptide.



Western blot analysis of various cells using WTAP Polyclonal Antibody diluted at 1/4500. Secondary antibody was diluted at 1:20000 cells nucleus extracted by Minute TM Cytoplasmic and Nuclear Fractionation kit (SC-003, Inventiotech, MN, USA).