

Anti-WEE2 antibody (151-200 aa) (STJ96269)

STJ96269

GENERAL INFORMATION

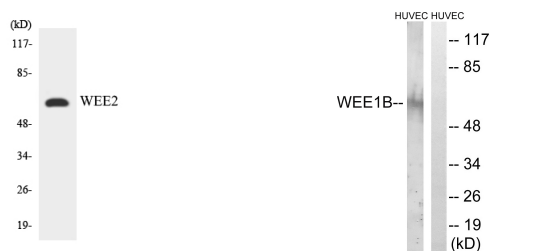
Product Type	Primary antibodies
Short Description	Rabbit polyclonal antibody anti-Wee1-like protein kinase 2 (151-200 aa) is suitable for use in Western Blot and ELISA research applications.
Applications	WB/ELISA
Host/Source	Rabbit
Reactivity	Human/Rat/Mouse

PRODUCT PROPERTIES

Clonality	Polyclonal
Clone ID	
Concentration	1 mg/mL
Conjugation	Unconjugated
Purification	The antibody was affinity-purified from rabbit antiserum by affinity-chromatography using epitope-specific immunogen.
Dilution Range	WB 1:500-1:2000 ELISA 1:5000
Formulation	Liquid in PBS containing 50% Glycerol, 0.5% BSA and 0.02% Sodium Azide.
Isotype	IgG
Storage Instruction	Store at -20°C for up to 1 year from the date of receipt, and avoid repeat freeze-thaw cycles.

TARGET INFORMATION

Gene ID	494551
Gene Symbol	WEE2
Uniprot ID	WEE2_HUMAN
Immunogen	The antiserum was produced against synthesized peptide derived from the human WEE2 at the amino acid range 151-200
Immunogen Region	151-200 aa
Specificity	Wee 2 Polyclonal Antibody detects endogenous levels of Wee 2 protein.
Immunogen Sequence	



Western blot analysis of the lysates from K562 cells using WEE2 antibody.

Western blot analysis of lysates from HUVEC cells, using WEE2 Antibody. The lane on the right is blocked with the synthesized peptide.

This product is suitable for in-vitro studies under the RESEARCH USE ONLY [RUO] licence. This product must not be used as for diagnostic or other medical purposes.
St John's Laboratory Ltd, Knowledge Dock Business Centre, University Way, London, E16 2RD | Tel: 0208 223 3081