

Anti-WEE1 antibody (19-68 aa) (STJ96268)

STJ96268

GENERAL INFORMATION

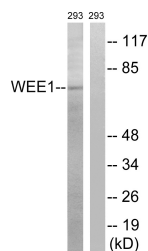
Product Type	Primary antibodies
Short Description	Rabbit polyclonal antibody anti-Wee1-like protein kinase (19-68 aa) is suitable for use in Western Blot and ELISA research applications.
Applications	WB/ELISA
Host/Source	Rabbit
Reactivity	Human/Mouse/Rat

PRODUCT PROPERTIES

Clonality	Polyclonal
Clone ID	
Concentration	1 mg/mL
Conjugation	Unconjugated
Purification	The antibody was affinity-purified from rabbit antiserum by affinity-chromatography using epitope-specific immunogen.
Dilution Range	WB 1:500-1:2000 ELISA 1:40000
Formulation	Liquid in PBS containing 50% Glycerol, 0.5% BSA and 0.02% Sodium Azide.
Isotype	IgG
Storage Instruction	Store at -20°C for up to 1 year from the date of receipt, and avoid repeat freeze-thaw cycles.

TARGET INFORMATION

Gene ID	7465
Gene Symbol	WEE1
Uniprot ID	WEE1_HUMAN
Immunogen	The antiserum was produced against synthesized peptide derived from the human WEE1 at the amino acid range 19-68
Immunogen Region	19-68 aa
Specificity	Wee 1 Polyclonal Antibody detects endogenous levels of Wee 1 protein.
Immunogen Sequence	



Western blot analysis of lysates from 293 cells, using WEE1 Antibody. The lane on the right is blocked with the synthesized peptide.