

## Anti-VPS26B antibody (231-280 aa) (STJ96254)

STJ96254

### GENERAL INFORMATION

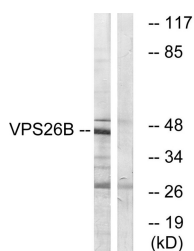
<b>Product Type</b>	Primary antibodies
<b>Short Description</b>	Rabbit polyclonal antibody anti-Vacuolar protein sorting-associated protein 26B (231-280 aa) is suitable for use in Western Blot and ELISA research applications.
<b>Applications</b>	WB/ELISA
<b>Host/Source</b>	Rabbit
<b>Reactivity</b>	Human/Mouse

### PRODUCT PROPERTIES

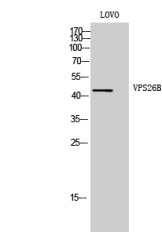
<b>Clonality</b>	Polyclonal
<b>Clone ID</b>	
<b>Concentration</b>	1 mg/mL
<b>Conjugation</b>	Unconjugated
<b>Purification</b>	The antibody was affinity-purified from rabbit antiserum by affinity-chromatography using epitope-specific immunogen.
<b>Dilution Range</b>	WB 1:500-1:2000 ELISA 1:10000
<b>Formulation</b>	Liquid in PBS containing 50% Glycerol, 0.5% BSA and 0.02% Sodium Azide.
<b>Isotype</b>	IgG
<b>Storage</b>	Store at -20°C for up to 1 year from the date of receipt, and avoid repeat freeze-thaw cycles.
<b>Instruction</b>	

### TARGET INFORMATION

<b>Gene ID</b>	112936
<b>Gene Symbol</b>	VPS26B
<b>Uniprot ID</b>	VP26B_HUMAN
<b>Immunogen</b>	The antiserum was produced against synthesized peptide derived from the human VPS26B at the amino acid range 231-280
<b>Immunogen Region</b>	231-280 aa
<b>Specificity</b>	VPS26B Polyclonal Antibody detects endogenous levels of VPS26B protein.
<b>Immunogen Sequence</b>	



Western blot analysis of lysates from LOVO cells, using VPS26B Antibody. The lane on the right is blocked with the synthesized peptide.



Western blot analysis of LOVO cells using VPS26B Polyclonal Antibody. Secondary antibody was diluted at 1:20000

This product is suitable for in-vitro studies under the RESEARCH USE ONLY [RUO] licence. This product must not be used as for diagnostic or other medical purposes.  
St John's Laboratory Ltd, Knowledge Dock Business Centre, University Way, London, E16 2RD | Tel: 0208 223 3081