

Anti-VEGFA antibody (110-159 aa) (STJ96235)

STJ96235

GENERAL INFORMATION

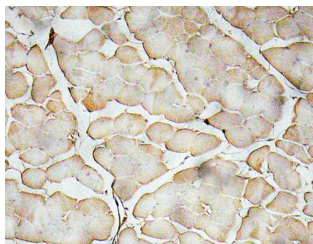
| | |
|--------------------------|---|
| Product Type | Primary antibodies |
| Short Description | Rabbit polyclonal antibody anti-Vascular endothelial growth factor A, long form (110-159 aa) is suitable for use in Western Blot, Immunofluorescence, Immunohistochemistry and ELISA research applications. |
| Applications | WB/IF/IHC/ELISA |
| Host/Source | Rabbit |
| Reactivity | Human/Mouse/Rat/Pig/Rabbit |

PRODUCT PROPERTIES

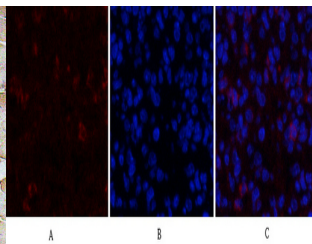
| | |
|----------------------------|---|
| Clonality | Polyclonal |
| Clone ID | |
| Concentration | 1 mg/mL |
| Conjugation | Unconjugated |
| Purification | The antibody was affinity-purified from rabbit antiserum by affinity-chromatography using epitope-specific immunogen. |
| Dilution | WB 1:500-1:2000 |
| Range | IF 1:50-200 IHC 1:100-1:300 ELISA 1:10000 |
| Formulation | Liquid in PBS containing 50% Glycerol, 0.5% BSA and 0.02% Sodium Azide. |
| Isotype | IgG |
| Storage Instruction | Store at -20°C for up to 1 year from the date of receipt, and avoid repeat freeze-thaw cycles. |

TARGET INFORMATION

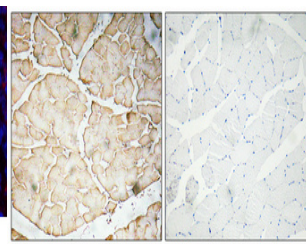
| | |
|--------------------|--|
| Gene ID | 7422 |
| Gene Symbol | VEGFA |
| Uniprot ID | VEGFA_HUMAN |
| Immunogen | The antiserum was produced against synthesized peptide derived from the human VEGF-A at the amino acid range 110-159 |
| Immunogen | 110-159 aa |
| Region | |
| Specificity | VEGF-A Polyclonal Antibody detects endogenous levels of VEGF-A protein. |
| Immunogen | |
| Sequence | |



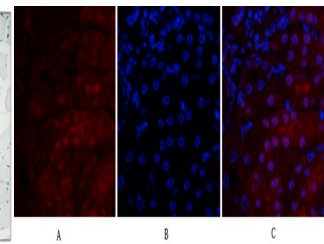
Immunohistochemistry analysis of VEGF-A antibody in paraffin-embedded human skeletal muscle tissue.



Immunofluorescence analysis of mouse-spleen tissue. 1. VEGF-A Polyclonal Antibody (red) was diluted at 1:200 (4°C, overnight). 2. Cy3 labeled Secondary antibody was diluted at 1:300 (room temperature, 50min). 3. Picture B: DAPI (blue) 10min. Picture A: Target. Picture B: DAPI. Picture C: merge of A+B



Immunohistochemical analysis of paraffin-embedded Human skeletal muscle. Antibody was diluted at 1:100 (4°C overnight). High-pressure and temperature Tris-EDTA, pH8.0 was used for antigen retrieval. Negative control (right) obtained from antibody was pre-absorbed by immunogen peptide.



Immunofluorescence analysis of mouse-kidney tissue. 1. VEGF-A Polyclonal Antibody (red) was diluted at 1:200 (4°C, overnight). 2. Cy3 labeled Secondary antibody was diluted at 1:300 (room temperature, 50min). 3. Picture B: DAPI (blue) 10min. Picture A: Target. Picture B: DAPI. Picture C: merge of A+B

This product is suitable for in-vitro studies under the RESEARCH USE ONLY [RUO] licence. This product must not be used as for diagnostic or other medical purposes.
St John's Laboratory Ltd, Knowledge Dock Business Centre, University Way, London, E16 2RD | Tel: 0208 223 3081