

Anti-VCP antibody (318-367 aa) (STJ96231)

STJ96231

GENERAL INFORMATION

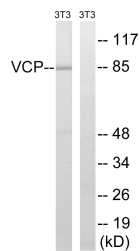
Product Type	Primary antibodies
Short Description	Rabbit polyclonal antibody anti-Transitional endoplasmic reticulum ATPase-ATPase p97 subunit (318-367 aa) is suitable for use in Western Blot, Immunohistochemistry, Immunofluorescence and ELISA research applications.
Applications	WB/IHC/IF/ELISA
Host/Source	Rabbit
Reactivity	Human/Mouse/Rat

PRODUCT PROPERTIES

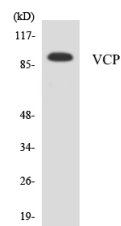
Clonality	Polyclonal
Clone ID	
Concentration	1 mg/mL
Conjugation	Unconjugated
Purification	The antibody was affinity-purified from rabbit antiserum by affinity-chromatography using epitope-specific immunogen.
Dilution	WB 1:500-1:2000
Range	IHC 1:100-1:300 ELISA 1:40000 IF 1:50-200
Formulation	Liquid in PBS containing 50% Glycerol, 0.5% BSA and 0.02% Sodium Azide.
Isotype	IgG
Storage Instruction	Store at -20°C for up to 1 year from the date of receipt, and avoid repeat freeze-thaw cycles.

TARGET INFORMATION

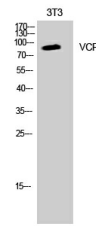
Gene ID	7415
Gene Symbol	VCP
Uniprot ID	TERA_HUMAN
Immunogen	The antiserum was produced against synthesized peptide derived from the human VCP at the amino acid range 318-367
Immunogen Region	318-367 aa
Specificity	VCP Polyclonal Antibody detects endogenous levels of VCP protein.
Immunogen Sequence	



Western blot analysis of lysates from NIH/3T3 cells, treated with starved 24h, using VCP Antibody. The lane on the right is blocked with the synthesized peptide.



Western blot analysis of the lysates from HepG2 cells using VCP antibody.



Western blot analysis of K562 cells using VCP Polyclonal Antibody diluted at 1/42000. Secondary antibody was diluted at 1:20000