

Anti-VASH1 antibody (261-310 aa) (STJ96218)

STJ96218

GENERAL INFORMATION

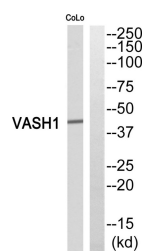
Product Type	Primary antibodies
Short Description	Rabbit polyclonal antibody anti-Tubuliny-Tyr carboxypeptidase 1 (261-310 aa) is suitable for use in Western Blot and ELISA research applications.
Applications	WB/ELISA
Host/Source	Rabbit
Reactivity	Human/Mouse/Rat

PRODUCT PROPERTIES

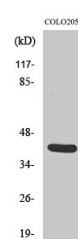
Clonality	Polyclonal
Clone ID	
Concentration	1 mg/mL
Conjugation	Unconjugated
Purification	The antibody was affinity-purified from rabbit antiserum by affinity-chromatography using epitope-specific immunogen.
Dilution Range	WB 1:500-1:2000 ELISA 1:40000
Formulation	Liquid in PBS containing 50% Glycerol, 0.5% BSA and 0.02% Sodium Azide.
Isotype	IgG
Storage Instruction	Store at -20°C for up to 1 year from the date of receipt, and avoid repeat freeze-thaw cycles.

TARGET INFORMATION

Gene ID	22846
Gene Symbol	VASH1
Uniprot ID	VASH1_HUMAN
Immunogen	The antiserum was produced against synthesized peptide derived from the human VASH1 at the amino acid range 261-310
Immunogen	261-310 aa
Region	
Specificity	Vasohibin Polyclonal Antibody detects endogenous levels of Vasohibin protein.
Immunogen	
Sequence	



Western blot analysis of VASH1 Antibody. The lane on the right is blocked with the VASH1 peptide.



Western blot analysis of various cells using Vasohibin Polyclonal Antibody. Secondary antibody was diluted at 1:20000.

This product is suitable for in-vitro studies under the RESEARCH USE ONLY [RUO] licence. This product must not be used as for diagnostic or other medical purposes.
St John's Laboratory Ltd, Knowledge Dock Business Centre, University Way, London, E16 2RD | Tel: 0208 223 3081