

## Anti-USP38 antibody (551-600 aa) (STJ96202)

STJ96202

### GENERAL INFORMATION

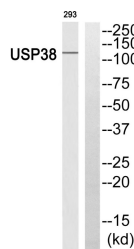
<b>Product Type</b>	Primary antibodies
<b>Short Description</b>	Rabbit polyclonal antibody anti-Ubiquitin carboxyl-terminal hydrolase 38 (551-600 aa) is suitable for use in Western Blot and ELISA research applications.
<b>Applications</b>	WB/ELISA
<b>Host/Source</b>	Rabbit
<b>Reactivity</b>	Human/Rat/Mouse

### PRODUCT PROPERTIES

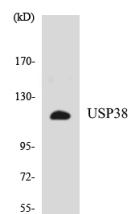
<b>Clonality</b>	Polyclonal
<b>Clone ID</b>	
<b>Concentration</b>	1 mg/mL
<b>Conjugation</b>	Unconjugated
<b>Purification</b>	The antibody was affinity-purified from rabbit antiserum by affinity-chromatography using epitope-specific immunogen.
<b>Dilution Range</b>	WB 1:500-1:2000 ELISA 1:10000
<b>Formulation</b>	Liquid in PBS containing 50% Glycerol, 0.5% BSA and 0.02% Sodium Azide.
<b>Isotype</b>	IgG
<b>Storage</b>	Store at -20°C for up to 1 year from the date of receipt, and avoid repeat freeze-thaw cycles.
<b>Instruction</b>	

### TARGET INFORMATION

<b>Gene ID</b>	84640
<b>Gene Symbol</b>	USP38
<b>Uniprot ID</b>	UBP38_HUMAN
<b>Immunogen</b>	The antiserum was produced against synthesized peptide derived from the human USP38 at the amino acid range 551-600
<b>Immunogen Region</b>	551-600 aa
<b>Specificity</b>	USP38 Polyclonal Antibody detects endogenous levels of USP38 protein.
<b>Immunogen Sequence</b>	



Western blot analysis of USP38 Antibody. The lane on the right is blocked with the USP38 peptide.



Western blot analysis of the lysates from HepG2 cells using USP38 antibody.



Western blot analysis of various cells using USP38 Polyclonal Antibody diluted at 1/41000. Secondary antibody was diluted at 1:20000.

This product is suitable for in-vitro studies under the RESEARCH USE ONLY [RUO] licence. This product must not be used as for diagnostic or other medical purposes.  
St John's Laboratory Ltd, Knowledge Dock Business Centre, University Way, London, E16 2RD | Tel: 0208 223 3081