

Anti-UCP3 antibody (259-308 aa) (STJ96179)

STJ96179

GENERAL INFORMATION

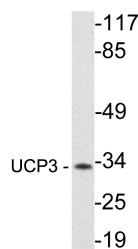
Product Type	Primary antibodies
Short Description	Rabbit polyclonal antibody anti-Putative mitochondrial transporter UCP3 (259-308 aa) is suitable for use in Western Blot and ELISA research applications.
Applications	WB/ELISA
Host/Source	Rabbit
Reactivity	Human/Mouse/Rat

PRODUCT PROPERTIES

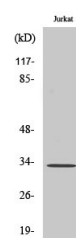
Clonality	Polyclonal
Clone ID	
Concentration	1 mg/mL
Conjugation	Unconjugated
Purification	The antibody was affinity-purified from rabbit antiserum by affinity-chromatography using epitope-specific immunogen.
Dilution Range	WB 1:500-1:2000 ELISA 1:10000
Formulation	Liquid in PBS containing 50% Glycerol, 0.5% BSA and 0.02% Sodium Azide.
Isotype	IgG
Storage	Store at -20°C for up to 1 year from the date of receipt, and avoid repeat freeze-thaw cycles.
Instruction	

TARGET INFORMATION

Gene ID	7352
Gene Symbol	UCP3
Uniprot ID	UCP3_HUMAN
Immunogen	The antiserum was produced against synthesized peptide derived from the human UCP3 at the amino acid range 259-308
Immunogen Region	259-308 aa
Specificity	UCP3 Polyclonal Antibody detects endogenous levels of UCP3 protein.
Immunogen Sequence	



Western blot analysis of lysate from Jurkat cells, using UCP3 antibody.



Western blot analysis of various cells using UCP3 Polyclonal Antibody diluted at 1/1000. Secondary antibody was diluted at 1:20000

This product is suitable for in-vitro studies under the RESEARCH USE ONLY [RUO] licence. This product must not be used as for diagnostic or other medical purposes.
St John's Laboratory Ltd, Knowledge Dock Business Centre, University Way, London, E16 2RD | Tel: 0208 223 3081