

## Anti-UBR5 antibody (1-50 aa) (STJ96174)

STJ96174

### GENERAL INFORMATION

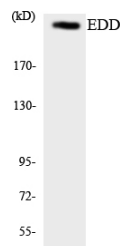
<b>Product Type</b>	Primary antibodies
<b>Short Description</b>	Rabbit polyclonal antibody anti-E3 ubiquitin-protein ligase UBR5 (1-50 aa) is suitable for use in Western Blot, Immunohistochemistry, Immunofluorescence and ELISA research applications.
<b>Applications</b>	WB/IHC/IF/ELISA
<b>Host/Source</b>	Rabbit
<b>Reactivity</b>	Human/Mouse

### PRODUCT PROPERTIES

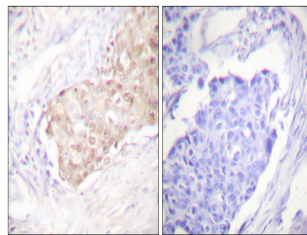
<b>Clonality</b>	Polyclonal
<b>Clone ID</b>	
<b>Concentration</b>	1 mg/mL
<b>Conjugation</b>	Unconjugated
<b>Purification</b>	The antibody was affinity-purified from rabbit antiserum by affinity-chromatography using epitope-specific immunogen.
<b>Dilution Range</b>	WB 1:500-1:2000 IHC 1:100-1:300 ELISA 1:5000 IF 1:50-200
<b>Formulation</b>	Liquid in PBS containing 50% Glycerol, 0.5% BSA and 0.02% Sodium Azide.
<b>Isotype</b>	IgG
<b>Storage Instruction</b>	Store at -20°C for up to 1 year from the date of receipt, and avoid repeat freeze-thaw cycles.

### TARGET INFORMATION

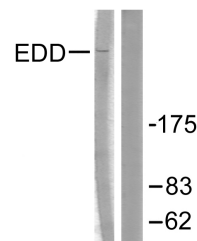
<b>Gene ID</b>	51366
<b>Gene Symbol</b>	UBR5
<b>Uniprot ID</b>	UBR5_HUMAN
<b>Immunogen</b>	The antiserum was produced against synthesized peptide derived from the human EDD at the amino acid range 1-50
<b>Immunogen Region</b>	1-50 aa
<b>Specificity</b>	UBR5 Polyclonal Antibody detects endogenous levels of UBR5 protein.
<b>Immunogen Sequence</b>	



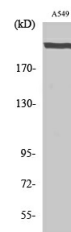
Western blot analysis of the lysates from K562 cells using EDD antibody.



Immunohistochemistry analysis of paraffin-embedded human breast carcinoma tissue, using EDD Antibody. The picture on the right is blocked with the synthesized peptide.



Western blot analysis of lysates from A549 cells, using EDD Antibody. The lane on the right is blocked with the synthesized peptide.



Western blot analysis of various cells using UBR5 Polyclonal Antibody. Secondary antibody was diluted at 1:20000 cells nucleus extracted by Minute™ Cytoplasmic and Nuclear Fractionation kit (SC-003, Inventiotech, MN, USA).

This product is suitable for in-vitro studies under the RESEARCH USE ONLY [RUO] licence. This product must not be used as for diagnostic or other medical purposes.

St John's Laboratory Ltd, Knowledge Dock Business Centre, University Way, London, E16 2RD | Tel: 0208 223 3081