

Anti-UBE2D2 antibody (98-147 aa) (STJ96163)

STJ96163

GENERAL INFORMATION

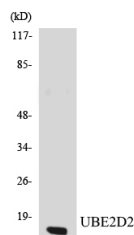
Product Type	Primary antibodies
Short Description	Rabbit polyclonal antibody anti-Ubiquitin-conjugating enzyme E2 D2 E2 ubiquitin-conjugating enzyme D2KB 2 (98-147 aa) is suitable for use in Western Blot and ELISA research applications.
Applications	WB/ELISA
Host/Source	Rabbit
Reactivity	Human/Mouse/Rat

PRODUCT PROPERTIES

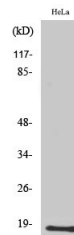
Clonality	Polyclonal
Clone ID	
Concentration	1 mg/mL
Conjugation	Unconjugated
Purification	The antibody was affinity-purified from rabbit antiserum by affinity-chromatography using epitope-specific immunogen.
Dilution Range	WB 1:500-1:2000 ELISA 1:10000
Formulation	Liquid in PBS containing 50% Glycerol, 0.5% BSA and 0.02% Sodium Azide.
Isotype	IgG
Storage	Store at -20°C for up to 1 year from the date of receipt, and avoid repeat freeze-thaw cycles.
Instruction	

TARGET INFORMATION

Gene ID	7322
Gene Symbol	UBE2D2
Uniprot ID	UB2D2_HUMAN
Immunogen	The antiserum was produced against synthesized peptide derived from the human UBE2D2 at the amino acid range 98-147
Immunogen Region	98-147 aa
Specificity	UBE2D2 Polyclonal Antibody detects endogenous levels of UBE2D2 protein.
Immunogen Sequence	



Western blot analysis of the lysates from K562 cells using UBE2D2 antibody.



Western blot analysis of various cells using UBE2D2 Polyclonal Antibody diluted at 1/142000. Secondary antibody was diluted at 1:20000

This product is suitable for in-vitro studies under the RESEARCH USE ONLY [RUO] licence. This product must not be used as for diagnostic or other medical purposes.
St John's Laboratory Ltd, Knowledge Dock Business Centre, University Way, London, E16 2RD | Tel: 0208 223 3081