

Anti-UBA7 antibody (963-1012 aa) (STJ96162)

STJ96162

GENERAL INFORMATION

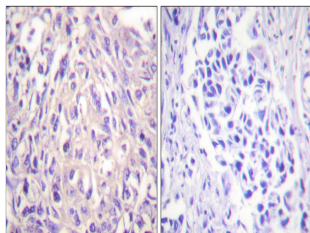
Product Type	Primary antibodies
Short Description	Rabbit polyclonal antibody anti-Ubiquitin-like modifier-activating enzyme 7 (963-1012 aa) is suitable for use in Western Blot, Immunohistochemistry, Immunofluorescence and ELISA research applications.
Applications	WB/IHC/IF/ELISA
Host/Source	Rabbit
Reactivity	Human/Rat/Mouse

PRODUCT PROPERTIES

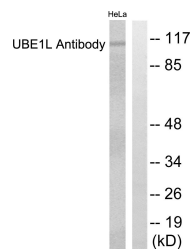
Clonality	Polyclonal
Clone ID	
Concentration	1 mg/mL
Conjugation	Unconjugated
Purification	The antibody was affinity-purified from rabbit antiserum by affinity-chromatography using epitope-specific immunogen.
Dilution	WB 1:500-1:2000
Range	IHC 1:100-1:300 ELISA 1:10000 IF 1:50-200
Formulation	Liquid in PBS containing 50% Glycerol, 0.5% BSA and 0.02% Sodium Azide.
Isotype	IgG
Storage Instruction	Store at -20°C for up to 1 year from the date of receipt, and avoid repeat freeze-thaw cycles.

TARGET INFORMATION

Gene ID	7318
Gene Symbol	UBA7
Uniprot ID	UBA7_HUMAN
Immunogen	The antiserum was produced against synthesized peptide derived from the human UBE1L at the amino acid range 963-1012
Immunogen	963-1012 aa
Region	
Specificity	UBE1L Polyclonal Antibody detects endogenous levels of UBE1L protein.
Immunogen Sequence	



Immunohistochemistry analysis of paraffin-embedded human breast carcinoma tissue, using UBE1L Antibody. The picture on the right is blocked with the synthesized peptide.



Western blot analysis of lysates from HeLa cells, using UBE1L Antibody. The lane on the right is blocked with the synthesized peptide.



Western blot analysis of various cells using UBE1L Polyclonal Antibody diluted at 1/42000. Secondary antibody was diluted at 1:20000