

## Anti-RNF144A antibody (151-200 aa) (STJ96161)

STJ96161

### GENERAL INFORMATION

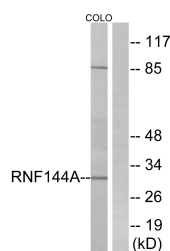
<b>Product Type</b>	Primary antibodies
<b>Short Description</b>	Rabbit polyclonal antibody anti-E3 ubiquitin-protein ligase RNF144A (151-200 aa) is suitable for use in Western Blot and ELISA research applications.
<b>Applications</b>	WB/ELISA
<b>Host/Source</b>	Rabbit
<b>Reactivity</b>	Human/Mouse

### PRODUCT PROPERTIES

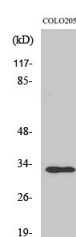
<b>Clonality</b>	Polyclonal
<b>Clone ID</b>	
<b>Concentration</b>	1 mg/mL
<b>Conjugation</b>	Unconjugated
<b>Purification</b>	The antibody was affinity-purified from rabbit antiserum by affinity-chromatography using epitope-specific immunogen.
<b>Dilution Range</b>	WB 1:500-1:2000 ELISA 1:40000
<b>Formulation</b>	Liquid in PBS containing 50% Glycerol, 0.5% BSA and 0.02% Sodium Azide.
<b>Isotype</b>	IgG
<b>Storage</b>	Store at -20°C for up to 1 year from the date of receipt, and avoid repeat freeze-thaw cycles.
<b>Instruction</b>	

### TARGET INFORMATION

<b>Gene ID</b>	9781
<b>Gene Symbol</b>	RNF144A
<b>Uniprot ID</b>	R144A_HUMAN
<b>Immunogen</b>	The antiserum was produced against synthesized peptide derived from the human RNF144A at the amino acid range 151-200
<b>Immunogen Region</b>	151-200 aa
<b>Specificity</b>	UBCE7IP4 Polyclonal Antibody detects endogenous levels of UBCE7IP4 protein.
<b>Immunogen Sequence</b>	



Western blot analysis of lysates from COLO cells, using RNF144A Antibody. The lane on the right is blocked with the synthesized peptide.



Western blot analysis of various cells using UBCE7IP4 Polyclonal Antibody. Secondary antibody was diluted at 1:20000