

## Anti-UBA5 antibody (281-330 aa) (STJ96160)

STJ96160

### GENERAL INFORMATION

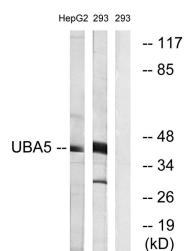
<b>Product Type</b>	Primary antibodies
<b>Short Description</b>	Rabbit polyclonal antibody anti-Ubiquitin-like modifier-activating enzyme 5 (281-330 aa) is suitable for use in Western Blot, Immunohistochemistry, Immunofluorescence and ELISA research applications.
<b>Applications</b>	WB/IHC/IF/ELISA
<b>Host/Source</b>	Rabbit
<b>Reactivity</b>	Human/Mouse/Rat

### PRODUCT PROPERTIES

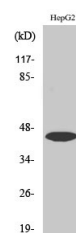
<b>Clonality</b>	Polyclonal
<b>Clone ID</b>	
<b>Concentration</b>	1 mg/mL
<b>Conjugation</b>	Unconjugated
<b>Purification</b>	The antibody was affinity-purified from rabbit antiserum by affinity-chromatography using epitope-specific immunogen.
<b>Dilution Range</b>	WB 1:500-1:2000 IHC 1:100-1:300 ELISA 1:5000 IF 1:50-200
<b>Formulation</b>	Liquid in PBS containing 50% Glycerol, 0.5% BSA and 0.02% Sodium Azide.
<b>Isotype</b>	IgG
<b>Storage Instruction</b>	Store at -20°C for up to 1 year from the date of receipt, and avoid repeat freeze-thaw cycles.

### TARGET INFORMATION

<b>Gene ID</b>	79876
<b>Gene Symbol</b>	UBA5
<b>Uniprot ID</b>	UBA5_HUMAN
<b>Immunogen</b>	The antiserum was produced against synthesized peptide derived from the human UBA5 at the amino acid range 281-330
<b>Immunogen Region</b>	281-330 aa
<b>Specificity</b>	Uba5 Polyclonal Antibody detects endogenous levels of Uba5 protein.
<b>Immunogen Sequence</b>	



Western blot analysis of lysates from HepG2 and 293 cells, using UBA5 Antibody. The lane on the right is blocked with the synthesized peptide.



Western blot analysis of various cells using Uba5 Polyclonal Antibody. Secondary antibody was diluted at 1:20000.