

Anti-TUBG1 antibody (386-435 aa) (STJ96146)

STJ96146

GENERAL INFORMATION

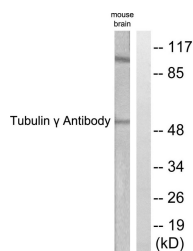
Product Type	Primary antibodies
Short Description	Rabbit polyclonal antibody anti-Tubulin gamma-1 chain (386-435 aa) is suitable for use in Western Blot, Immunohistochemistry, Immunofluorescence and ELISA research applications.
Applications	WB/IHC/IF/ELISA
Host/Source	Rabbit
Reactivity	Human/Mouse/Rat

PRODUCT PROPERTIES

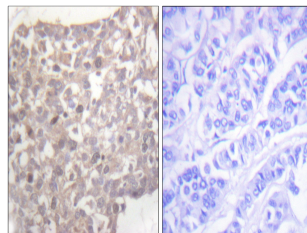
Clonality	Polyclonal
Clone ID	
Concentration	1 mg/mL
Conjugation	Unconjugated
Purification	The antibody was affinity-purified from rabbit antiserum by affinity-chromatography using epitope-specific immunogen.
Dilution Range	WB 1:500-1:2000 IHC 1:100-1:300 ELISA 1:5000 IF 1:50-200
Formulation	Liquid in PBS containing 50% Glycerol, 0.5% BSA and 0.02% Sodium Azide.
Isotype	IgG
Storage Instruction	Store at -20°C for up to 1 year from the date of receipt, and avoid repeat freeze-thaw cycles.

TARGET INFORMATION

Gene ID	7283
Gene Symbol	TUBG1
Uniprot ID	TBG1_HUMAN
Immunogen	The antiserum was produced against synthesized peptide derived from the human Tubulin gamma at the amino acid range 386-435
Immunogen Region	386-435 aa
Specificity	Tubulin Gamma Polyclonal Antibody detects endogenous levels of Tubulin Gamma protein.
Immunogen Sequence	



Western blot analysis of lysates from mouse brain, using Tubulin gamma Antibody. The lane on the right is blocked with the synthesized peptide.



Immunohistochemistry analysis of paraffin-embedded human breast carcinoma tissue, using Tubulin gamma Antibody. The picture on the right is blocked with the synthesized peptide.