

Anti-Tubulin Alpha-3C/D/E antibody (201-250 aa) (STJ96144)

STJ96144

GENERAL INFORMATION

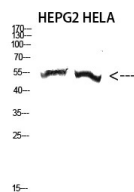
Product Type	Primary antibodies
Short Description	Rabbit polyclonal antibody anti-OBSOLETE and Tubulin alpha-3E chain (201-250 aa) is suitable for use in Western Blot and ELISA research applications.
Applications	WB/ELISA
Host/Source	Rabbit
Reactivity	Human/Mouse/Rat

PRODUCT PROPERTIES

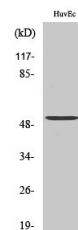
Clonality	Polyclonal
Clone ID	
Concentration	1 mg/mL
Conjugation	Unconjugated
Purification	The antibody was affinity-purified from rabbit antiserum by affinity-chromatography using epitope-specific immunogen.
Dilution Range	WB 1:500-1:2000 ELISA 1:5000
Formulation	Liquid in PBS containing 50% Glycerol, 0.5% BSA and 0.02% Sodium Azide.
Isotype	IgG
Storage	Store at -20°C for up to 1 year from the date of receipt, and avoid repeat freeze-thaw cycles.
Instruction	

TARGET INFORMATION

Gene ID	112714
Gene Symbol	TUBA3E
Uniprot ID	TBA3E_HUMAN
Immunogen	The antiserum was produced against synthesized peptide derived from the human TUBA3C/E at the amino acid range 201-250
Immunogen Region	201-250 aa
Specificity	Tubulin Alpha-3C/D/E Polyclonal Antibody detects endogenous levels of Tubulin Alpha-3C/D/E protein.
Immunogen Sequence	



Western blot analysis of HEPG2 HELA cells using Tubulin Alpha-3C/D/E Polyclonal Antibody diluted at 1:2000. Secondary antibody was diluted at 1:20000



Western blot analysis of various cells using Tubulin Alpha-3C/D/E Polyclonal Antibody diluted at 1:1/2000. Secondary antibody was diluted at 1:20000

This product is suitable for in-vitro studies under the RESEARCH USE ONLY [RUO] licence. This product must not be used as for diagnostic or other medical purposes.
St John's Laboratory Ltd, Knowledge Dock Business Centre, University Way, London, E16 2RD | Tel: 0208 223 3081