

## Anti-TSG101 antibody (281-330 aa) (STJ96125)

STJ96125

### GENERAL INFORMATION

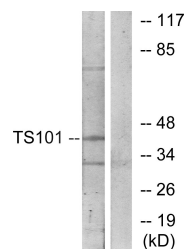
<b>Product Type</b>	Primary antibodies
<b>Short Description</b>	Rabbit polyclonal antibody anti-Tumor susceptibility gene 101 protein (281-330 aa) is suitable for use in Western Blot, Immunohistochemistry, Immunofluorescence and ELISA research applications.
<b>Applications</b>	WB/IHC/IF/ELISA
<b>Host/Source</b>	Rabbit
<b>Reactivity</b>	Human/Mouse/Rat/Monkey

### PRODUCT PROPERTIES

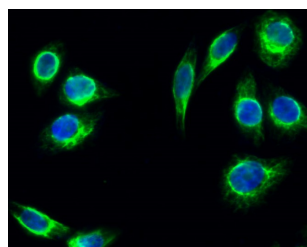
<b>Clonality</b>	Polyclonal
<b>Clone ID</b>	
<b>Concentration</b>	1 mg/mL
<b>Conjugation</b>	Unconjugated
<b>Purification</b>	The antibody was affinity-purified from rabbit antiserum by affinity-chromatography using epitope-specific immunogen.
<b>Dilution</b>	WB 1:500-1:2000
<b>Range</b>	IHC 1:100-1:300 IF 1:200-1:1000 ELISA 1:5000
<b>Formulation</b>	Liquid in PBS containing 50% Glycerol, 0.5% BSA and 0.02% Sodium Azide.
<b>Isotype</b>	IgG
<b>Storage</b>	Store at -20°C for up to 1 year from the date of receipt, and avoid repeat freeze-thaw cycles.
<b>Instruction</b>	

### TARGET INFORMATION

<b>Gene ID</b>	7251
<b>Gene Symbol</b>	TSG101
<b>Uniprot ID</b>	TS101_HUMAN
<b>Immunogen</b>	The antiserum was produced against synthesized peptide derived from the human TSG101 at the amino acid range 281-330
<b>Immunogen</b>	281-330 aa
<b>Region</b>	
<b>Specificity</b>	Tsg 101 Polyclonal Antibody detects endogenous levels of Tsg 101 protein.
<b>Immunogen</b>	
<b>Sequence</b>	



Western blot analysis of lysates from COS7 cells, using TS101 Antibody. The lane on the right is blocked with the synthesized peptide.



Immunofluorescence analysis of HeLa cell. 1. Tsg 101 Polyclonal Antibody (green) was diluted at 1:200 (4A°C overnight). 2. Goat Anti Rabbit Alexa Fluor 488 Catalog (NA was diluted at 1:1000 (room temperature, 50min). 3. DAPI (blue) 10min.

This product is suitable for in-vitro studies under the RESEARCH USE ONLY [RUO] licence. This product must not be used as for diagnostic or other medical purposes.  
St John's Laboratory Ltd, Knowledge Dock Business Centre, University Way, London, E16 2RD | Tel: 0208 223 3081