

Anti-MED12 antibody (611-660 aa) (STJ96091)

STJ96091

GENERAL INFORMATION

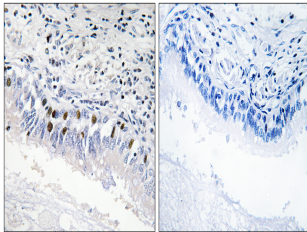
Product Type	Primary antibodies
Short Description	Rabbit polyclonal antibody anti-Mediator of RNA polymerase II transcription subunit 12 (611-660 aa) is suitable for use in Immunohistochemistry, Immunofluorescence, Western Blot and ELISA research applications.
Applications	IHC/IF/WB/ELISA
Host/Source	Rabbit
Reactivity	Human/Rat/Mouse

PRODUCT PROPERTIES

Clonality	Polyclonal
Clone ID	
Concentration	1 mg/mL
Conjugation	Unconjugated
Purification	The antibody was affinity-purified from rabbit antiserum by affinity-chromatography using epitope-specific immunogen.
Dilution Range	WB 1:500-2000 IHC 1:100-1:300 ELISA 1:5000 IF 1:50-200
Formulation	Liquid in PBS containing 50% Glycerol, 0.5% BSA and 0.02% Sodium Azide.
Isotype	IgG
Storage Instruction	Store at -20°C for up to 1 year from the date of receipt, and avoid repeat freeze-thaw cycles.

TARGET INFORMATION

Gene ID	9968
Gene Symbol	MED12
Uniprot ID	MED12_HUMAN
Immunogen	The antiserum was produced against synthesized peptide derived from the human MED12 at the amino acid range 611-660
Immunogen Region	611-660 aa
Specificity	TRAP230 Polyclonal Antibody detects endogenous levels of TRAP230 protein.
Immunogen Sequence	



Immunohistochemistry analysis of paraffin-embedded human lung carcinoma, using MED12 Antibody. The picture on the right is blocked with the synthesized peptide.