

## Anti-TOP3B antibody (51-100 aa) (STJ96063)

STJ96063

### GENERAL INFORMATION

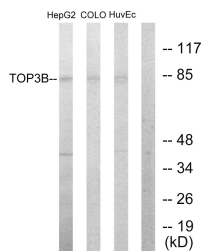
<b>Product Type</b>	Primary antibodies
<b>Short Description</b>	Rabbit polyclonal antibody anti-DNA topoisomerase 3-beta-1 (51-100 aa) is suitable for use in Western Blot, Immunohistochemistry, Immunofluorescence and ELISA research applications.
<b>Applications</b>	WB/IHC/IF/ELISA
<b>Host/Source</b>	Rabbit
<b>Reactivity</b>	Human/Mouse

### PRODUCT PROPERTIES

<b>Clonality</b>	Polyclonal
<b>Clone ID</b>	
<b>Concentration</b>	1 mg/mL
<b>Conjugation</b>	Unconjugated
<b>Purification</b>	The antibody was affinity-purified from rabbit antiserum by affinity-chromatography using epitope-specific immunogen.
<b>Dilution Range</b>	WB 1:500-1:2000 IHC 1:100-1:300 ELISA 1:20000 IF 1:50-200
<b>Formulation</b>	Liquid in PBS containing 50% Glycerol, 0.5% BSA and 0.02% Sodium Azide.
<b>Isotype</b>	IgG
<b>Storage Instruction</b>	Store at -20°C for up to 1 year from the date of receipt, and avoid repeat freeze-thaw cycles.

### TARGET INFORMATION

<b>Gene ID</b>	8940
<b>Gene Symbol</b>	TOP3B
<b>Uniprot ID</b>	TOP3B_HUMAN
<b>Immunogen</b>	The antiserum was produced against synthesized peptide derived from the human TOP3B at the amino acid range 51-100
<b>Immunogen Region</b>	51-100 aa
<b>Specificity</b>	Topo III Beta-1 Polyclonal Antibody detects endogenous levels of Topo III Beta-1 protein.
<b>Immunogen Sequence</b>	



Western blot analysis of lysates from HepG2, COLO205, and HUVEC cells, using TOP3B Antibody. The lane on the right is blocked with the synthesized peptide.



Western blot analysis of various cells using Topo III Beta-1 Polyclonal Antibody. Secondary antibody was diluted at 1:20000 cells nucleus extracted by Minute TM Cytoplasmic and Nuclear Fractionation Kit (SC-003, Inventiotech, MN, USA).

This product is suitable for in-vitro studies under the RESEARCH USE ONLY [RUO] licence. This product must not be used as for diagnostic or other medical purposes.  
St John's Laboratory Ltd, Knowledge Dock Business Centre, University Way, London, E16 2RD | Tel: 0208 223 3081