

Anti-ALPL antibody (201-250 aa) (STJ96048)

STJ96048

GENERAL INFORMATION

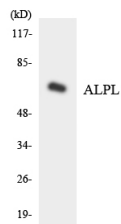
Product Type	Primary antibodies
Short Description	Rabbit polyclonal antibody anti-Alkaline phosphatase, tissue-nonspecific isozyme (201-250 aa) is suitable for use in Western Blot and ELISA research applications.
Applications	WB/ELISA
Host/Source	Rabbit
Reactivity	Human/Mouse/Rat

PRODUCT PROPERTIES

Clonality	Polyclonal
Clone ID	
Concentration	1 mg/mL
Conjugation	Unconjugated
Purification	The antibody was affinity-purified from rabbit antiserum by affinity-chromatography using epitope-specific immunogen.
Dilution Range	WB 1:500-1:2000 ELISA 1:40000
Formulation	Liquid in PBS containing 50% Glycerol, 0.5% BSA and 0.02% Sodium Azide.
Isotype	IgG
Storage	Store at -20°C for up to 1 year from the date of receipt, and avoid repeat freeze-thaw cycles.
Instruction	

TARGET INFORMATION

Gene ID	249
Gene Symbol	ALPL
Uniprot ID	PPBT_HUMAN
Immunogen	The antiserum was produced against synthesized peptide derived from the human ALPL at the amino acid range 201-250
Immunogen Region	201-250 aa
Specificity	TNAP Polyclonal Antibody detects endogenous levels of TNAP protein.
Immunogen Sequence	



Western blot analysis of the lysates from Jurkat cells using ALPL antibody.

This product is suitable for in-vitro studies under the RESEARCH USE ONLY [RUO] licence. This product must not be used as for diagnostic or other medical purposes.
St John's Laboratory Ltd, Knowledge Dock Business Centre, University Way, London, E16 2RD | Tel: 0208 223 3081