

Anti-ANO1 antibody (921-970 aa) (STJ96044)

STJ96044

GENERAL INFORMATION

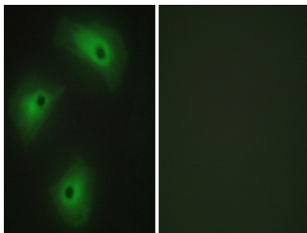
Product Type	Primary antibodies
Short Description	Rabbit polyclonal antibody anti-Anoctamin-1 (921-970 aa) is suitable for use in Immunofluorescence and ELISA research applications.
Applications	IF/ELISA
Host/Source	Rabbit
Reactivity	Human/Mouse

PRODUCT PROPERTIES

Clonality	Polyclonal
Clone ID	
Concentration	1 mg/mL
Conjugation	Unconjugated
Purification	The antibody was affinity-purified from rabbit antiserum by affinity-chromatography using epitope-specific immunogen.
Dilution Range	IF 1:200-1:1000 ELISA 1:20000
Formulation	Liquid in PBS containing 50% Glycerol, 0.5% BSA and 0.02% Sodium Azide.
Isotype	IgG
Storage Instruction	Store at -20°C for up to 1 year from the date of receipt, and avoid repeat freeze-thaw cycles.

TARGET INFORMATION

Gene ID	55107
Gene Symbol	ANO1
Uniprot ID	ANO1_HUMAN
Immunogen	The antiserum was produced against synthesized peptide derived from the human TM16A at the amino acid range 921-970
Immunogen Region	921-970 aa
Specificity	TMEM16A Polyclonal Antibody detects endogenous levels of TMEM16A protein.
Immunogen Sequence	



Immunofluorescence analysis of HeLa cells, using TM16A Antibody. The picture on the right is blocked with the synthesized peptide.