

Anti-TMC8 antibody (601-650 aa) (STJ96041)

STJ96041

GENERAL INFORMATION

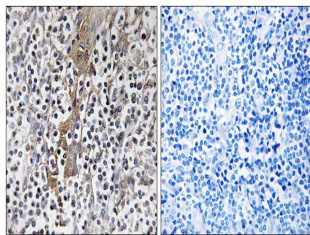
Product Type	Primary antibodies
Short Description	Rabbit polyclonal antibody anti-Transmembrane channel-like protein 8 (601-650 aa) is suitable for use in Western Blot, Immunohistochemistry, Immunofluorescence and ELISA research applications.
Applications	WB/IHC/IF/ELISA
Host/Source	Rabbit
Reactivity	Human/Mouse/Rat

PRODUCT PROPERTIES

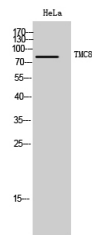
Clonality	Polyclonal
Clone ID	
Concentration	1 mg/mL
Conjugation	Unconjugated
Purification	The antibody was affinity-purified from rabbit antiserum by affinity-chromatography using epitope-specific immunogen.
Dilution Range	WB 1:500-1:2000 IHC 1:100-1:300 ELISA 1:5000 IF 1:50-200
Formulation	Liquid in PBS containing 50% Glycerol, 0.5% BSA and 0.02% Sodium Azide.
Isotype	IgG
Storage Instruction	Store at -20°C for up to 1 year from the date of receipt, and avoid repeat freeze-thaw cycles.

TARGET INFORMATION

Gene ID	147138
Gene Symbol	TMC8
Uniprot ID	TMC8_HUMAN
Immunogen	The antiserum was produced against synthesized peptide derived from the human TMC8 at the amino acid range 601-650
Immunogen Region	601-650 aa
Specificity	TMC8 Polyclonal Antibody detects endogenous levels of TMC8 protein.
Immunogen Sequence	



Immunohistochemistry analysis of paraffin-embedded human tonsil, using TMC8 Antibody. The picture on the right is blocked with the synthesized peptide.



Western blot analysis of HeLa cells using TMC8 Polyclonal Antibody. Secondary antibody was diluted at 1:20000