

Anti-TLK1 antibody (201-250 aa) (STJ96037)

STJ96037

GENERAL INFORMATION

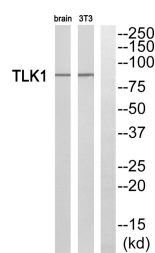
Product Type	Primary antibodies
Short Description	Rabbit polyclonal antibody anti-Serine/threonine-protein kinase tousel-like 1 (201-250 aa) is suitable for use in Western Blot, ELISA and Immunohistochemistry research applications.
Applications	WB/ELISA/IHC
Host/Source	Rabbit
Reactivity	Human/Rat/Mouse

PRODUCT PROPERTIES

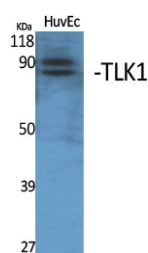
Clonality	Polyclonal
Clone ID	
Concentration	1 mg/mL
Conjugation	Unconjugated
Purification	The antibody was affinity-purified from rabbit antiserum by affinity-chromatography using epitope-specific immunogen.
Dilution Range	WB 1:500-2000 IHC-P 1:50-300 ELISA 2000-20000
Formulation	Liquid in PBS containing 50% Glycerol, 0.5% BSA and 0.02% Sodium Azide.
Isotype	IgG
Storage Instruction	Store at -20°C for up to 1 year from the date of receipt, and avoid repeat freeze-thaw cycles.

TARGET INFORMATION

Gene ID	9874
Gene Symbol	TLK1
Uniprot ID	TLK1_HUMAN
Immunogen	The antiserum was produced against synthesized peptide derived from the human TLK1 at the amino acid range 201-250
Immunogen Region	201-250 aa
Specificity	TLK1 Polyclonal Antibody detects endogenous levels of TLK1 protein.
Immunogen Sequence	



Western blot analysis of TLK1 Antibody. The lane on the right is blocked with the TLK1 peptide.



Western blot analysis of various cells using TLK1 Polyclonal Antibody. Secondary antibody was diluted at 1:20000

This product is suitable for in-vitro studies under the RESEARCH USE ONLY [RUO] licence. This product must not be used as for diagnostic or other medical purposes.
St John's Laboratory Ltd, Knowledge Dock Business Centre, University Way, London, E16 2RD | Tel: 0208 223 3081