

## Anti-TIMP1 antibody (61-110 aa) (STJ96023)

STJ96023

### GENERAL INFORMATION

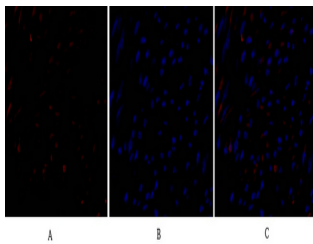
<b>Product Type</b>	Primary antibodies
<b>Short Description</b>	Rabbit polyclonal antibody anti-Metalloproteinase inhibitor 1 (61-110 aa) is suitable for use in Immunofluorescence, Western Blot, Immunohistochemistry and ELISA research applications.
<b>Applications</b>	IF/WB/IHC/ELISA
<b>Host/Source</b>	Rabbit
<b>Reactivity</b>	Human/Mouse/Rat/Rabbit

### PRODUCT PROPERTIES

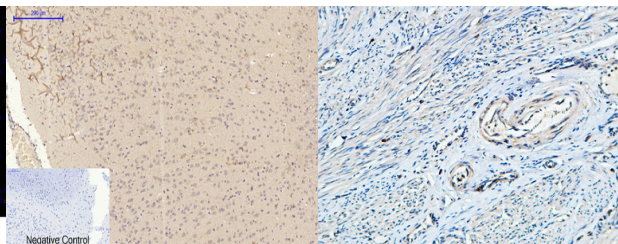
<b>Clonality</b>	Polyclonal
<b>Clone ID</b>	
<b>Concentration</b>	1 mg/mL
<b>Conjugation</b>	Unconjugated
<b>Purification</b>	The antibody was affinity-purified from rabbit antiserum by affinity-chromatography using epitope-specific immunogen.
<b>Dilution Range</b>	IF 1:50-200 WB 1:500-1:2000 ELISA 1:10000
<b>Formulation</b>	Liquid in PBS containing 50% Glycerol, 0.5% BSA and 0.02% Sodium Azide.
<b>Isotype</b>	IgG
<b>Storage Instruction</b>	Store at -20°C for up to 1 year from the date of receipt, and avoid repeat freeze-thaw cycles.

### TARGET INFORMATION

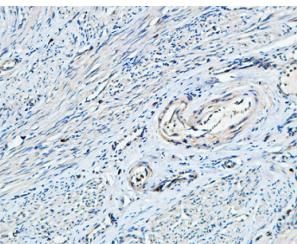
<b>Gene ID</b>	7076
<b>Gene Symbol</b>	TIMP1
<b>Uniprot ID</b>	TIMP1_HUMAN
<b>Immunogen</b>	The antiserum was produced against synthesized peptide derived from the human TIMP1 at the amino acid range 61-110
<b>Immunogen Region</b>	61-110 aa
<b>Specificity</b>	TIMP-1 Polyclonal Antibody detects endogenous levels of TIMP-1 protein.
<b>Immunogen Sequence</b>	



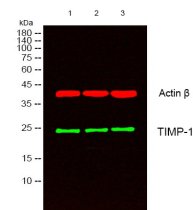
Immunofluorescence analysis of human-uterus tissue. 1. TIMP-1 Polyclonal Antibody (red) was diluted at 1:200 (4Å°C, overnight). 2. Cy3 labeled Secondary antibody was diluted at 1:300 (room temperature, 50min). 3. Picture B: DAPI (blue) 10min. Picture A: target. Picture B: DAPI. Picture C: merge of A+B



Immunohistochemical analysis of paraffin-embedded Rat-brain tissue. 1. TIMP-1 Polyclonal Antibody was diluted at 1:200 (4Å°C, overnight). 2. Sodium citrate pH 6.0 was used for antibody retrieval (>98Å°C, 20min). 3. Secondary antibody was diluted at 1:200 (room temperature, 30min). Negative control was used by secondary antibody only.



Immunohistochemical analysis of paraffin-embedded Human uterus. 1. Antibody was diluted at 1:100 (4Å°C overnight). 2. High-pressure and temperature EDTA, pH6.0 was used for antigen retrieval. 3. Secondary antibody was diluted at 1:200 (room temperature, 30min).



Western blot analysis of lysates from 1) SH-SY5Y, 2) 293, 3) rat brain cells, (Green) primary antibody was diluted at 1:1000, 4Å°C over night, secondary antibody (cat: NA) was diluted at 1:10000, 37Å°C 1hour. (Red) Actin Beta monoclonal antibody (5E7) (cat: STJ96930) antibody was diluted at 1:5000 as loading control, 4Å°C over night, secondary antibody (cat: NA) was diluted at 1:10000, 37Å°C 1hour.

This product is suitable for in-vitro studies under the RESEARCH USE ONLY [RUO] licence. This product must not be used as for diagnostic or other medical purposes.

St John's Laboratory Ltd, Knowledge Dock Business Centre, University Way, London, E16 2RD | Tel: 0208 223 3081