

Anti-TIGD3 antibody (381-430 aa) (STJ96021)

STJ96021

GENERAL INFORMATION

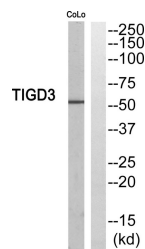
Product Type	Primary antibodies
Short Description	Rabbit polyclonal antibody anti-Tigger transposable element-derived protein 3 (381-430 aa) is suitable for use in Western Blot, Immunohistochemistry, Immunofluorescence and ELISA research applications.
Applications	WB/IHC/IF/ELISA
Host/Source	Rabbit
Reactivity	Human/Rat/Mouse

PRODUCT PROPERTIES

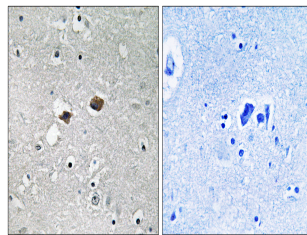
Clonality	Polyclonal
Clone ID	
Concentration	1 mg/mL
Conjugation	Unconjugated
Purification	The antibody was affinity-purified from rabbit antiserum by affinity-chromatography using epitope-specific immunogen.
Dilution	WB 1:500-1:2000
Range	IHC 1:100-1:300 ELISA 1:40000 IF 1:50-200
Formulation	Liquid in PBS containing 50% Glycerol, 0.5% BSA and 0.02% Sodium Azide.
Isotype	IgG
Storage Instruction	Store at -20°C for up to 1 year from the date of receipt, and avoid repeat freeze-thaw cycles.

TARGET INFORMATION

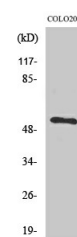
Gene ID	220359
Gene Symbol	TIGD3
Uniprot ID	TIGD3_HUMAN
Immunogen	The antiserum was produced against synthesized peptide derived from the human TIGD3 at the amino acid range 381-430
Immunogen Region	381-430 aa
Specificity	TIGD3 Polyclonal Antibody detects endogenous levels of TIGD3 protein.
Immunogen Sequence	



Western blot analysis of TIGD3 Antibody. The lane on the right is blocked with the TIGD3 peptide.



Immunohistochemistry analysis of paraffin-embedded human brain, using TIGD3 Antibody. The lane on the right is blocked with the TIGD3 peptide.



Western blot analysis of various cells using TIGD3 Polyclonal Antibody. Secondary antibody was diluted at 1:20000 cells nucleus extracted by Minute™ Cytoplasmic and Nuclear Fractionation kit (SC-003, Inventibiotec, MN, USA).