

Anti-TIGD1 antibody (251-300 aa) (STJ96020)

STJ96020

GENERAL INFORMATION

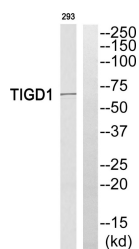
Product Type	Primary antibodies
Short Description	Rabbit polyclonal antibody anti-Tigger transposable element-derived protein 1 (251-300 aa) is suitable for use in Western Blot, ELISA and Immunohistochemistry research applications.
Applications	WB/ELISA/IHC
Host/Source	Rabbit
Reactivity	Human/Rat/Mouse

PRODUCT PROPERTIES

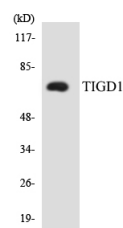
Clonality	Polyclonal
Clone ID	
Concentration	1 mg/mL
Conjugation	Unconjugated
Purification	The antibody was affinity-purified from rabbit antiserum by affinity-chromatography using epitope-specific immunogen.
Dilution Range	WB 1:500-2000 IHC-P 1:50-300 ELISA 2000-20000
Formulation	Liquid in PBS containing 50% Glycerol, 0.5% BSA and 0.02% Sodium Azide.
Isotype	IgG
Storage Instruction	Store at -20°C for up to 1 year from the date of receipt, and avoid repeat freeze-thaw cycles.

TARGET INFORMATION

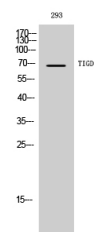
Gene ID	200765
Gene Symbol	TIGD1
Uniprot ID	TIGD1_HUMAN
Immunogen	The antiserum was produced against synthesized peptide derived from the human TIGD1 at the amino acid range 251-300
Immunogen Region	251-300 aa
Specificity	TIGD1 Polyclonal Antibody detects endogenous levels of TIGD1 protein.
Immunogen Sequence	



Western blot analysis of TIGD1 antibody. The lane on the right is blocked with the TIGD1 peptide.



Western blot analysis of the lysates from HeLa cells using TIGD1 antibody.



Western blot analysis of 293 cells using TIGD1 Polyclonal Antibody diluted at 1:1000. Secondary antibody was diluted at 1:20000 cells nucleus extracted by Minute TM Cytoplasmic and Nuclear Fractionation kit (SC-003, Inventorbiotech, MN, USA).

This product is suitable for in-vitro studies under the RESEARCH USE ONLY [RUO] licence. This product must not be used as for diagnostic or other medical purposes.
St John's Laboratory Ltd, Knowledge Dock Business Centre, University Way, London, E16 2RD | Tel: 0208 223 3081