

Anti-KLF11 antibody (1-50 aa) (STJ96018)

STJ96018

GENERAL INFORMATION

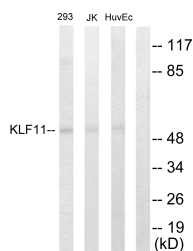
Product Type	Primary antibodies
Short Description	Rabbit polyclonal antibody anti-Krueppel-like factor 11 (1-50 aa) is suitable for use in Western Blot, Immunohistochemistry, Immunofluorescence and ELISA research applications.
Applications	WB/IHC/IF/ELISA
Host/Source	Rabbit
Reactivity	Human/Mouse

PRODUCT PROPERTIES

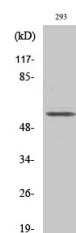
Clonality	Polyclonal
Clone ID	
Concentration	1 mg/mL
Conjugation	Unconjugated
Purification	The antibody was affinity-purified from rabbit antiserum by affinity-chromatography using epitope-specific immunogen.
Dilution Range	WB 1:500-1:2000 IHC 1:100-1:300 IF 1:200-1:1000 ELISA 1:20000
Formulation	Liquid in PBS containing 50% Glycerol, 0.5% BSA and 0.02% Sodium Azide.
Isotype	IgG
Storage Instruction	Store at -20°C for up to 1 year from the date of receipt, and avoid repeat freeze-thaw cycles.

TARGET INFORMATION

Gene ID	8462
Gene Symbol	KLF11
Uniprot ID	KLF11_HUMAN
Immunogen	The antiserum was produced against synthesized peptide derived from the human KLF11 at the amino acid range 1-50
Immunogen Region	1-50 aa
Specificity	TIEG2 Polyclonal Antibody detects endogenous levels of TIEG2 protein.
Immunogen Sequence	



Western blot analysis of lysates from 293, Jurkat, and HUVEC cells, using KLF11 Antibody. The lane on the right is blocked with the synthesized peptide.



Western blot analysis of various cells using TIEG2 Polyclonal Antibody cells nucleus extracted by Minute TM Cytoplasmic and Nuclear Fractionation kit (SC-003, Inventiotech, MN, USA).