

Anti-GTF2A1 antibody (281-330 aa) (STJ95979)

STJ95979

GENERAL INFORMATION

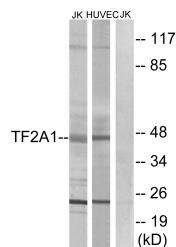
Product Type	Primary antibodies
Short Description	Rabbit polyclonal antibody anti-Transcription initiation factor IIA subunit 1 (281-330 aa) is suitable for use in Western Blot, Immunohistochemistry, Immunofluorescence and ELISA research applications.
Applications	WB/IHC/IF/ELISA
Host/Source	Rabbit
Reactivity	Human/Mouse/Rat

PRODUCT PROPERTIES

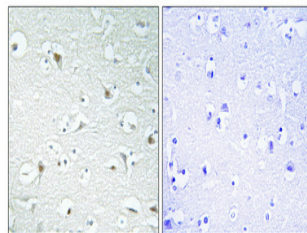
Clonality	Polyclonal
Clone ID	
Concentration	1 mg/mL
Conjugation	Unconjugated
Purification	The antibody was affinity-purified from rabbit antiserum by affinity-chromatography using epitope-specific immunogen.
Dilution	WB 1:500-1:2000
Range	IHC 1:100-1:300 ELISA 1:40000 IF 1:50-200
Formulation	Liquid in PBS containing 50% Glycerol, 0.5% BSA and 0.02% Sodium Azide.
Isotype	IgG
Storage Instruction	Store at -20°C for up to 1 year from the date of receipt, and avoid repeat freeze-thaw cycles.

TARGET INFORMATION

Gene ID	2957
Gene Symbol	GTF2A1
Uniprot ID	TF2AA_HUMAN
Immunogen	The antiserum was produced against synthesized peptide derived from the human TF2A1 at the amino acid range 281-330
Immunogen Region	281-330 aa
Specificity	TFIIA-Alpha Polyclonal Antibody detects endogenous levels of TFIIA-Alpha protein.
Immunogen Sequence	



Western blot analysis of lysates from Jurkat and HUVEC cells, using TF2A1 Antibody. The lane on the right is blocked with the synthesized peptide.



Immunohistochemical analysis of paraffin-embedded Human brain. Antibody was diluted at 1:100 (44°C overnight). High-pressure and temperature Tris-EDTA, pH8.0 was used for antigen retrieval. Negative control (right) obtained from antibody was pre-absorbed by immunogen peptide.

This product is suitable for in-vitro studies under the RESEARCH USE ONLY [RUO] licence. This product must not be used as for diagnostic or other medical purposes.
St John's Laboratory Ltd, Knowledge Dock Business Centre, University Way, London, E16 2RD | Tel: 0208 223 3081