

Anti-ETV6 antibody (371-420 aa) (STJ95964)

STJ95964

GENERAL INFORMATION

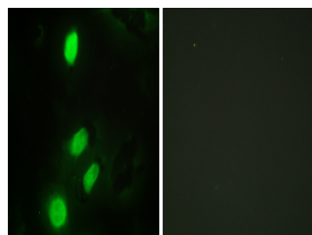
Product Type	Primary antibodies
Short Description	Rabbit polyclonal antibody anti-Transcription factor ETV6 (371-420 aa) is suitable for use in Western Blot, Immunohistochemistry, Immunofluorescence and ELISA research applications.
Applications	WB/IHC/IF/ELISA
Host/Source	Rabbit
Reactivity	Human/Mouse/Rat

PRODUCT PROPERTIES

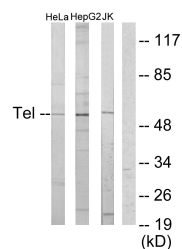
Clonality	Polyclonal
Clone ID	
Concentration	1 mg/mL
Conjugation	Unconjugated
Purification	The antibody was affinity-purified from rabbit antiserum by affinity-chromatography using epitope-specific immunogen.
Dilution Range	WB 1:500-1:2000 IHC 1:100-1:300 IF 1:200-1:1000 ELISA 1:5000
Formulation	Liquid in PBS containing 50% Glycerol, 0.5% BSA and 0.02% Sodium Azide.
Isotype	IgG
Storage Instruction	Store at -20°C for up to 1 year from the date of receipt, and avoid repeat freeze-thaw cycles.

TARGET INFORMATION

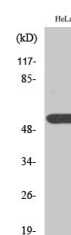
Gene ID	2120
Gene Symbol	ETV6
Uniprot ID	ETV6_HUMAN
Immunogen	The antiserum was produced against synthesized peptide derived from the human ETV6 at the amino acid range 371-420
Immunogen Region	371-420 aa
Specificity	TEL Polyclonal Antibody detects endogenous levels of TEL protein.
Immunogen Sequence	



Immunofluorescence analysis of HeLa cells, using ETV6 Antibody. The picture on the right is blocked with the synthesized peptide.



Western blot analysis of lysates from HeLa, HepG2, and Jurkat cells, using ETV6 Antibody. The lane on the right is blocked with the synthesized peptide.



Western blot analysis of various cells using TEL Polyclonal Antibody