

Anti-TEAD1 antibody (30-110 aa) (STJ95961)

STJ95961

GENERAL INFORMATION

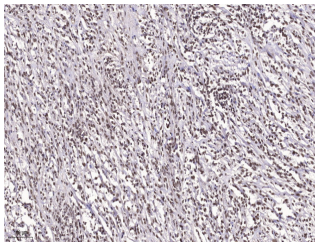
Product Type	Primary antibodies
Short Description	Rabbit polyclonal antibody anti-Transcriptional enhancer factor TEF-1 (30-110 aa) is suitable for use in Western Blot, Immunohistochemistry, Immunofluorescence and ELISA research applications.
Applications	WB/IHC/IF/ELISA
Host/Source	Rabbit
Reactivity	Human/Mouse/Rat

PRODUCT PROPERTIES

Clonality	Polyclonal
Clone ID	
Concentration	1 mg/mL
Conjugation	Unconjugated
Purification	The antibody was affinity-purified from rabbit antiserum by affinity-chromatography using epitope-specific immunogen.
Dilution Range	WB 1:500-1:2000 IHC 1:100-1:300 ELISA 1:40000 IF 1:50-200
Formulation	Liquid in PBS containing 50% Glycerol, 0.5% BSA and 0.02% Sodium Azide.
Isotype	IgG
Storage Instruction	Store at -20°C for up to 1 year from the date of receipt, and avoid repeat freeze-thaw cycles.

TARGET INFORMATION

Gene ID	7003
Gene Symbol	TEAD1
Uniprot ID	TEAD1_HUMAN
Immunogen	Synthesized peptide derived from TEF-1 at the amino acid range 30-110
Immunogen Region	30-110 aa
Specificity	TEF-1 Polyclonal Antibody detects endogenous levels of TEF-1 protein.
Immunogen Sequence	



Immunohistochemical analysis of paraffin-embedded human Small intestinal stromal tumor. 1. Tris-EDTA, pH9.0 was used for antigen retrieval. 2. Antibody was diluted at 1:200 (4A °C overnight). 3. Secondary antibody was diluted at 1:200 (room temperature, 45min).

This product is suitable for in-vitro studies under the RESEARCH USE ONLY [RUO] licence. This product must not be used as for diagnostic or other medical purposes.
St John's Laboratory Ltd, Knowledge Dock Business Centre, University Way, London, E16 2RD | Tel: 0208 223 3081