

Anti-TCF3 antibody (571-620 aa) (STJ95944)

STJ95944

GENERAL INFORMATION

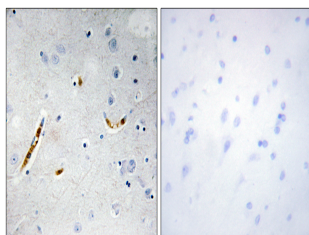
Product Type	Primary antibodies
Short Description	Rabbit polyclonal antibody anti-Transcription factor E2-alpha (571-620 aa) is suitable for use in Western Blot, Immunohistochemistry, Immunofluorescence and ELISA research applications.
Applications	WB/IHC/IF/ELISA
Host/Source	Rabbit
Reactivity	Human/Mouse/Rat

PRODUCT PROPERTIES

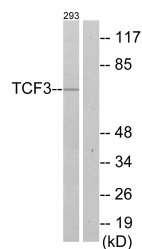
Clonality	Polyclonal
Clone ID	
Concentration	1 mg/mL
Conjugation	Unconjugated
Purification	The antibody was affinity-purified from rabbit antiserum by affinity-chromatography using epitope-specific immunogen.
Dilution Range	WB 1:500-1:2000 IHC 1:100-1:300 ELISA 1:20000 IF 1:50-200
Formulation	Liquid in PBS containing 50% Glycerol, 0.5% BSA and 0.02% Sodium Azide.
Isotype	IgG
Storage Instruction	Store at -20°C for up to 1 year from the date of receipt, and avoid repeat freeze-thaw cycles.

TARGET INFORMATION

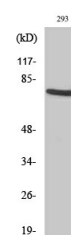
Gene ID	6929
Gene Symbol	TCF3
Uniprot ID	TFE2_HUMAN
Immunogen	The antiserum was produced against synthesized peptide derived from the human TCF3 at the amino acid range 571-620
Immunogen Region	571-620 aa
Specificity	TCF-3 Polyclonal Antibody detects endogenous levels of TCF-3 protein.
Immunogen Sequence	



Immunohistochemistry analysis of paraffin-embedded human brain tissue, using TCF3 Antibody. The picture on the right is blocked with the synthesized peptide.



Western blot analysis of lysates from 293 cells, using TCF3 Antibody. The lane on the right is blocked with the synthesized peptide.



Western blot analysis of various cells using TCF-3 Polyclonal Antibody