

## Anti-CDH13 antibody (331-380 aa) (STJ95937)

STJ95937

### GENERAL INFORMATION

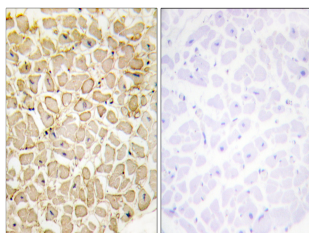
<b>Product Type</b>	Primary antibodies
<b>Short Description</b>	Rabbit polyclonal antibody anti-Cadherin-13 (331-380 aa) is suitable for use in Western Blot, Immunohistochemistry, Immunofluorescence and ELISA research applications.
<b>Applications</b>	WB/IHC/IF/ELISA
<b>Host/Source</b>	Rabbit
<b>Reactivity</b>	Human/Mouse/Rat

### PRODUCT PROPERTIES

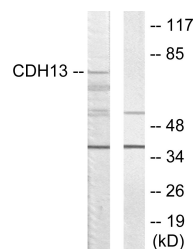
<b>Clonality</b>	Polyclonal
<b>Clone ID</b>	
<b>Concentration</b>	1 mg/mL
<b>Conjugation</b>	Unconjugated
<b>Purification</b>	The antibody was affinity-purified from rabbit antiserum by affinity-chromatography using epitope-specific immunogen.
<b>Dilution Range</b>	WB 1:500-1:2000 IHC 1:100-1:300 IF 1:200-1:1000 ELISA 1:20000
<b>Formulation</b>	Liquid in PBS containing 50% Glycerol, 0.5% BSA and 0.02% Sodium Azide.
<b>Isotype</b>	IgG
<b>Storage Instruction</b>	Store at -20°C for up to 1 year from the date of receipt, and avoid repeat freeze-thaw cycles.

### TARGET INFORMATION

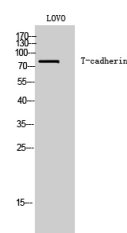
<b>Gene ID</b>	1012
<b>Gene Symbol</b>	CDH13
<b>Uniprot ID</b>	CAD13_HUMAN
<b>Immunogen</b>	The antiserum was produced against synthesized peptide derived from the human CDH13 at the amino acid range 331-380
<b>Immunogen Region</b>	331-380 aa
<b>Specificity</b>	T-cadherin Polyclonal Antibody detects endogenous levels of T-cadherin protein.
<b>Immunogen Sequence</b>	



Immunohistochemistry analysis of paraffin-embedded human heart tissue, using CDH13 Antibody. The picture on the right is blocked with the synthesized peptide.



Western blot analysis of lysates from LOVO cells, using CDH13 Antibody. The lane on the right is blocked with the synthesized peptide.



Western blot analysis of LOVO cells using T-cadherin Polyclonal Antibody