

Anti-TBPL2 antibody (81-130 aa) (STJ95928)

STJ95928

GENERAL INFORMATION

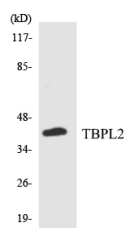
Product Type	Primary antibodies
Short Description	Rabbit polyclonal antibody anti-TATA box-binding protein-like 2 (81-130 aa) is suitable for use in Western Blot, Immunohistochemistry, Immunofluorescence and ELISA research applications.
Applications	WB/IHC/IF/ELISA
Host/Source	Rabbit
Reactivity	Human/Rat/Mouse

PRODUCT PROPERTIES

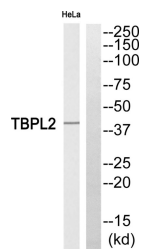
Clonality	Polyclonal
Clone ID	
Concentration	1 mg/mL
Conjugation	Unconjugated
Purification	The antibody was affinity-purified from rabbit antiserum by affinity-chromatography using epitope-specific immunogen.
Dilution Range	WB 1:500-1:2000 IHC 1:100-1:300 ELISA 1:5000 IF 1:50-200
Formulation	Liquid in PBS containing 50% Glycerol, 0.5% BSA and 0.02% Sodium Azide.
Isotype	IgG
Storage Instruction	Store at -20°C for up to 1 year from the date of receipt, and avoid repeat freeze-thaw cycles.

TARGET INFORMATION

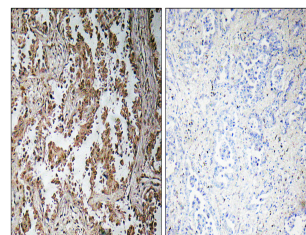
Gene ID	387332
Gene Symbol	TBPL2
Uniprot ID	TBPL2_HUMAN
Immunogen	The antiserum was produced against synthesized peptide derived from the human TBPL2 at the amino acid range 81-130
Immunogen Region	81-130 aa
Specificity	TBPL2 Polyclonal Antibody detects endogenous levels of TBPL2 protein.
Immunogen Sequence	



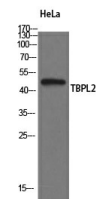
Western blot analysis of the lysates from COLO205 cells using TBPL2 antibody.



Western blot analysis of TBPL2 Antibody. The lane on the right is blocked with the TBPL2 peptide.



Immunohistochemistry analysis of paraffin-embedded human lung carcinoma, using TBPL2 Antibody. The lane on the right is blocked with the TBPL2 peptide.



Western blot analysis of HeLa cells using TBPL2 Polyclonal Antibody

This product is suitable for in-vitro studies under the RESEARCH USE ONLY [RUO] licence. This product must not be used as for diagnostic or other medical purposes.
St John's Laboratory Ltd, Knowledge Dock Business Centre, University Way, London, E16 2RD | Tel: 0208 223 3081