

## Anti-MAP3K7 antibody (161-210 aa) (STJ95901)

STJ95901

### GENERAL INFORMATION

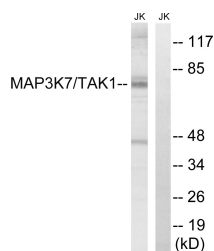
<b>Product Type</b>	Primary antibodies
<b>Short Description</b>	Rabbit polyclonal antibody anti-Mitogen-activated protein kinase kinase kinase 7 (161-210 aa) is suitable for use in Immunofluorescence, Western Blot, Immunohistochemistry and ELISA research applications.
<b>Applications</b>	IF/WB/IHC/ELISA
<b>Host/Source</b>	Rabbit
<b>Reactivity</b>	Human/Mouse/Rat

### PRODUCT PROPERTIES

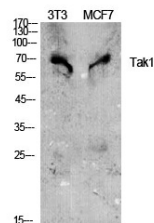
<b>Clonality</b>	Polyclonal
<b>Clone ID</b>	
<b>Concentration</b>	1 mg/mL
<b>Conjugation</b>	Unconjugated
<b>Purification</b>	The antibody was affinity-purified from rabbit antiserum by affinity-chromatography using epitope-specific immunogen.
<b>Dilution</b>	IF 1:50-200
<b>Range</b>	WB 1:500-1:2000 IHC 1:100-1:300 ELISA 1:40000
<b>Formulation</b>	Liquid in PBS containing 50% Glycerol, 0.5% BSA and 0.02% Sodium Azide.
<b>Isotype</b>	IgG
<b>Storage Instruction</b>	Store at -20°C for up to 1 year from the date of receipt, and avoid repeat freeze-thaw cycles.

### TARGET INFORMATION

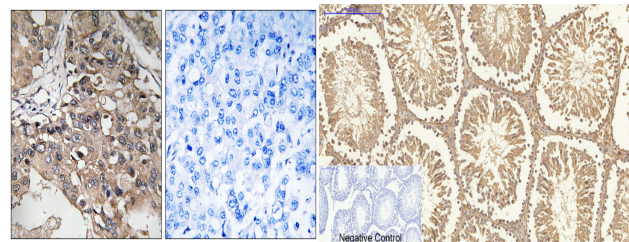
<b>Gene ID</b>	6885
<b>Gene Symbol</b>	MAP3K7
<b>Uniprot ID</b>	M3K7_HUMAN
<b>Immunogen</b>	The antiserum was produced against synthesized peptide derived from the human MAP3K7 at the amino acid range 161-210
<b>Immunogen Region</b>	161-210 aa
<b>Specificity</b>	Tak1 Polyclonal Antibody detects endogenous levels of Tak1 protein.
<b>Immunogen Sequence</b>	



Western blot analysis of lysates from Jurkat cells, treated with heat shock, using MAP3K7 Antibody. The lane on the right is blocked with the synthesized peptide.



Western blot analysis of various cells using Tak1 Polyclonal Antibody diluted at 1/1000



Immunohistochemistry analysis of paraffin-embedded human breast carcinoma tissue, using MAP3K7 Antibody. The picture on the right is blocked with the synthesized peptide.

Immunohistochemical analysis of paraffin-embedded Rat-testis tissue. 1. Tak1 Polyclonal Antibody was diluted at 1:200 (4A°C, overnight). 2. Sodium citrate pH 6.0 was used for antibody retrieval (>98A°C, 20min). 3. Secondary antibody was diluted at 1:200 (room temperature, 30min). Negative control was used by secondary antibody only.

This product is suitable for in-vitro studies under the RESEARCH USE ONLY [RUO] licence. This product must not be used as for diagnostic or other medical purposes.  
St John's Laboratory Ltd, Knowledge Dock Business Centre, University Way, London, E16 2RD | Tel: 0208 223 3081