

Anti-TADA2A antibody (206-255 aa) (STJ95889)

STJ95889

GENERAL INFORMATION

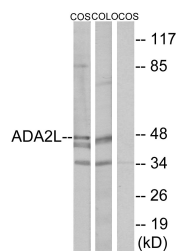
Product Type	Primary antibodies
Short Description	Rabbit polyclonal antibody anti-Transcriptional adapter 2-alpha (206-255 aa) is suitable for use in Western Blot and ELISA research applications.
Applications	WB/ELISA
Host/Source	Rabbit
Reactivity	Human/Mouse/Rat/Monkey

PRODUCT PROPERTIES

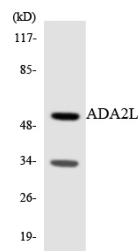
Clonality	Polyclonal
Clone ID	
Concentration	1 mg/mL
Conjugation	Unconjugated
Purification	The antibody was affinity-purified from rabbit antiserum by affinity-chromatography using epitope-specific immunogen.
Dilution Range	WB 1:500-1:2000 ELISA 1:10000
Formulation	Liquid in PBS containing 50% Glycerol, 0.5% BSA and 0.02% Sodium Azide.
Isotype	IgG
Storage Instruction	Store at -20°C for up to 1 year from the date of receipt, and avoid repeat freeze-thaw cycles.

TARGET INFORMATION

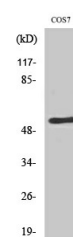
Gene ID	6871
Gene Symbol	TADA2A
Uniprot ID	TAD2A_HUMAN
Immunogen	The antiserum was produced against synthesized peptide derived from the human ADA2L at the amino acid range 206-255
Immunogen	206-255 aa
Region	
Specificity	TADA2L Polyclonal Antibody detects endogenous levels of TADA2L protein.
Immunogen	
Sequence	



Western blot analysis of lysates from COS7 and COLO205 cells, using ADA2L Antibody. The lane on the right is blocked with the synthesized peptide.



Western blot analysis of the lysates from RAW264.7 cells using ADA2L antibody.



Western blot analysis of various cells using TADA2L Polyclonal Antibody diluted at 1:10000 cells nucleus extracted by Minute TM Cytoplasmic and Nuclear Fractionation kit (SC-003, Inventiotech, MN, USA).

This product is suitable for in-vitro studies under the RESEARCH USE ONLY [RUO] licence. This product must not be used as for diagnostic or other medical purposes.
St John's Laboratory Ltd, Knowledge Dock Business Centre, University Way, London, E16 2RD | Tel: 0208 223 3081