

## Anti-TAS2R39 antibody (218-267 aa) (STJ95874)

STJ95874

### GENERAL INFORMATION

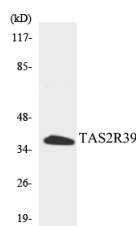
<b>Product Type</b>	Primary antibodies
<b>Short Description</b>	Rabbit polyclonal antibody anti-Taste receptor type 2 member 39 (218-267 aa) is suitable for use in Western Blot, Immunofluorescence and ELISA research applications.
<b>Applications</b>	WB/IF/ELISA
<b>Host/Source</b>	Rabbit
<b>Reactivity</b>	Human/Rat/Mouse

### PRODUCT PROPERTIES

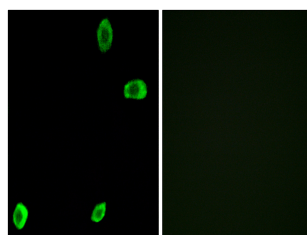
<b>Clonality</b>	Polyclonal
<b>Clone ID</b>	
<b>Concentration</b>	1 mg/mL
<b>Conjugation</b>	Unconjugated
<b>Purification</b>	The antibody was affinity-purified from rabbit antiserum by affinity-chromatography using epitope-specific immunogen.
<b>Dilution Range</b>	WB 1:500-1:2000 IF 1:200-1:1000 ELISA 1:20000
<b>Formulation</b>	Liquid in PBS containing 50% Glycerol, 0.5% BSA and 0.02% Sodium Azide.
<b>Isotype</b>	IgG
<b>Storage Instruction</b>	Store at -20°C for up to 1 year from the date of receipt, and avoid repeat freeze-thaw cycles.

### TARGET INFORMATION

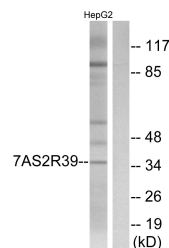
<b>Gene ID</b>	259285
<b>Gene Symbol</b>	TAS2R39
<b>Uniprot ID</b>	T2R39_HUMAN
<b>Immunogen</b>	The antiserum was produced against synthesized peptide derived from the human TAS2R39 at the amino acid range 218-267
<b>Immunogen Region</b>	218-267 aa
<b>Specificity</b>	T2R39 Polyclonal Antibody detects endogenous levels of T2R39 protein.
<b>Immunogen Sequence</b>	



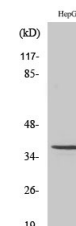
Western blot analysis of the lysates from HepG2 cells using TAS2R39 antibody.



Immunofluorescence analysis of A549 cells, using TAS2R39 Antibody. The picture on the right is blocked with the synthesized peptide.



Western blot analysis of lysates from HepG2 cells, using TAS2R39 Antibody. The lane on the right is blocked with the synthesized peptide.



Western blot analysis of various cells using T2R39 Polyclonal Antibody

This product is suitable for in-vitro studies under the RESEARCH USE ONLY [RUO] licence. This product must not be used as for diagnostic or other medical purposes.  
St John's Laboratory Ltd, Knowledge Dock Business Centre, University Way, London, E16 2RD | Tel: 0208 223 3081