

Anti-TAS2R16 antibody (136-185 aa) (STJ95872)

STJ95872

GENERAL INFORMATION

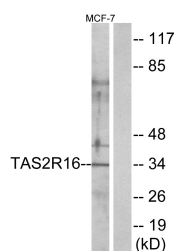
| | |
|--------------------------|---|
| Product Type | Primary antibodies |
| Short Description | Rabbit polyclonal antibody anti-Taste receptor type 2 member 16 (136-185 aa) is suitable for use in Western Blot, Immunofluorescence and ELISA research applications. |
| Applications | WB/IF/ELISA |
| Host/Source | Rabbit |
| Reactivity | Human/Rat/Mouse |

PRODUCT PROPERTIES

| | |
|----------------------------|---|
| Clonality | Polyclonal |
| Clone ID | |
| Concentration | 1 mg/mL |
| Conjugation | Unconjugated |
| Purification | The antibody was affinity-purified from rabbit antiserum by affinity-chromatography using epitope-specific immunogen. |
| Dilution Range | WB 1:500-1:2000 IF 1:200-1:1000 ELISA 1:20000 |
| Formulation | Liquid in PBS containing 50% Glycerol, 0.5% BSA and 0.02% Sodium Azide. |
| Isotype | IgG |
| Storage Instruction | Store at -20°C for up to 1 year from the date of receipt, and avoid repeat freeze-thaw cycles. |

TARGET INFORMATION

| | |
|---------------------------|---|
| Gene ID | 50833 |
| Gene Symbol | TAS2R16 |
| Uniprot ID | T2R16_HUMAN |
| Immunogen | The antiserum was produced against synthesized peptide derived from the human TAS2R16 at the amino acid range 136-185 |
| Immunogen Region | 136-185 aa |
| Specificity | T2R16 Polyclonal Antibody detects endogenous levels of T2R16 protein. |
| Immunogen Sequence | |



Western blot analysis of lysates from MCF-7 cells, using TAS2R16 Antibody. The lane on the right is blocked with the synthesized peptide.

This product is suitable for in-vitro studies under the RESEARCH USE ONLY [RUO] licence. This product must not be used as for diagnostic or other medical purposes.
St John's Laboratory Ltd, Knowledge Dock Business Centre, University Way, London, E16 2RD | Tel: 0208 223 3081