

Anti-TAS2R1 antibody (6-55 aa) (STJ95868)

STJ95868

GENERAL INFORMATION

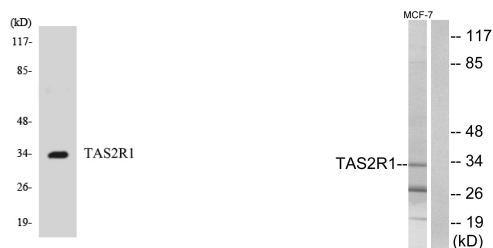
Product Type	Primary antibodies
Short Description	Rabbit polyclonal antibody anti-Taste receptor type 2 member 1 (6-55 aa) is suitable for use in Western Blot, ELISA and Immunohistochemistry research applications.
Applications	WB/ELISA/IHC
Host/Source	Rabbit
Reactivity	Human/Rat/Mouse

PRODUCT PROPERTIES

Clonality	Polyclonal
Clone ID	
Concentration	1 mg/mL
Conjugation	Unconjugated
Purification	The antibody was affinity-purified from rabbit antiserum by affinity-chromatography using epitope-specific immunogen.
Dilution Range	WB 1:500-2000 IHC-P 1:50-300 ELISA 2000-20000
Formulation	Liquid in PBS containing 50% Glycerol, 0.5% BSA and 0.02% Sodium Azide.
Isotype	IgG
Storage Instruction	Store at -20°C for up to 1 year from the date of receipt, and avoid repeat freeze-thaw cycles.

TARGET INFORMATION

Gene ID	50834
Gene Symbol	TAS2R1
Uniprot ID	TA2R1_HUMAN
Immunogen	The antiserum was produced against synthesized peptide derived from the human TAS2R1 at the amino acid range 6-55
Immunogen Region	6-55 aa
Specificity	T2R1 Polyclonal Antibody detects endogenous levels of T2R1 protein.
Immunogen Sequence	



Western blot analysis of the lysates from K562 cells using TAS2R1 antibody.

Western blot analysis of lysates from MCF-7 cells, using TAS2R1 Antibody. The lane on the right is blocked with the synthesized peptide.

This product is suitable for in-vitro studies under the RESEARCH USE ONLY [RUO] licence. This product must not be used as for diagnostic or other medical purposes.
St John's Laboratory Ltd, Knowledge Dock Business Centre, University Way, London, E16 2RD | Tel: 0208 223 3081