

Anti-SYT10 antibody (380-460 aa) (STJ95851)

STJ95851

GENERAL INFORMATION

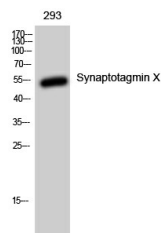
Product Type	Primary antibodies
Short Description	Rabbit polyclonal antibody anti-Synaptotagmin-10 (380-460 aa) is suitable for use in Western Blot and Immunohistochemistry research applications.
Applications	WB/IHC
Host/Source	Rabbit
Reactivity	Human/Mouse/Rat

PRODUCT PROPERTIES

Clonality	Polyclonal
Clone ID	
Concentration	1 mg/mL
Conjugation	Unconjugated
Purification	The antibody was affinity-purified from rabbit antiserum by affinity-chromatography using epitope-specific immunogen.
Dilution Range	WB 1:500-2000 IHC-P 1:50-300
Formulation	Liquid in PBS containing 50% Glycerol, 0.5% BSA and 0.02% Sodium Azide.
Isotype	IgG
Storage	Store at -20°C for up to 1 year from the date of receipt, and avoid repeat freeze-thaw cycles.
Instruction	

TARGET INFORMATION

Gene ID	341359
Gene Symbol	SYT10
Uniprot ID	SYT10_HUMAN
Immunogen	Synthesized peptide derived from Synaptotagmin X at the amino acid range 380-460
Immunogen Region	380-460 aa
Specificity	Synaptotagmin X Polyclonal Antibody detects endogenous levels of Synaptotagmin X protein.
Immunogen Sequence	



Western blot analysis of 293 cells using Synaptotagmin X Polyclonal Antibody

This product is suitable for in-vitro studies under the RESEARCH USE ONLY [RUO] licence. This product must not be used as for diagnostic or other medical purposes.
St John's Laboratory Ltd, Knowledge Dock Business Centre, University Way, London, E16 2RD | Tel: 0208 223 3081