

Anti-SYN1 antibody (26-75 aa) (STJ95847)

STJ95847

GENERAL INFORMATION

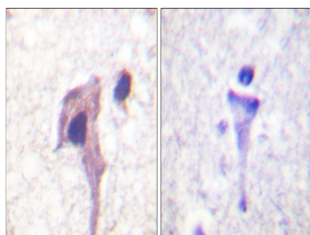
Product Type	Primary antibodies
Short Description	Rabbit polyclonal antibody anti-Synapsin-1 (26-75 aa) is suitable for use in Western Blot, Immunohistochemistry, Immunofluorescence and ELISA research applications.
Applications	WB/IHC/IF/ELISA
Host/Source	Rabbit
Reactivity	Human/Mouse/Rat

PRODUCT PROPERTIES

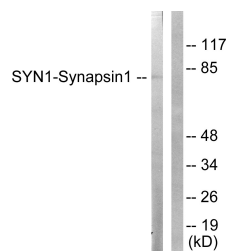
Clonality	Polyclonal
Clone ID	
Concentration	1 mg/mL
Conjugation	Unconjugated
Purification	The antibody was affinity-purified from rabbit antiserum by affinity-chromatography using epitope-specific immunogen.
Dilution Range	WB 1:500-1:2000 IHC 1:100-1:300 IF 1:200-1:1000 ELISA 1:20000
Formulation	Liquid in PBS containing 50% Glycerol, 0.5% BSA and 0.02% Sodium Azide.
Isotype	IgG
Storage Instruction	Store at -20°C for up to 1 year from the date of receipt, and avoid repeat freeze-thaw cycles.

TARGET INFORMATION

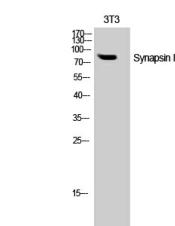
Gene ID	6853
Gene Symbol	SYN1
Uniprot ID	SYN1_HUMAN
Immunogen	The antiserum was produced against synthesized peptide derived from the human Synapsin1 at the amino acid range 26-75
Immunogen Region	26-75 aa
Specificity	Synapsin I Polyclonal Antibody detects endogenous levels of Synapsin I protein.
Immunogen Sequence	



Immunohistochemistry analysis of paraffin-embedded human brain tissue, using Synapsin1 Antibody. The picture on the right is blocked with the synthesized peptide.



Western blot analysis of lysates from NIH/3T3 cells, treated with Nocodazole 1ug/ml 16h, using Synapsin1 Antibody. The lane on the right is blocked with the synthesized peptide.



Western blot analysis of NIH-3T3 cells using Synapsin I Polyclonal Antibody