

Anti-SFSWAP antibody (201-250 aa) (STJ95840)

STJ95840

GENERAL INFORMATION

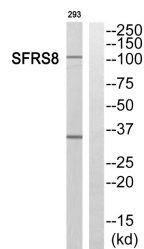
Product Type	Primary antibodies
Short Description	Rabbit polyclonal antibody anti-Splicing factor, suppressor of white-apricot homolog (201-250 aa) is suitable for use in Western Blot and Immunohistochemistry research applications.
Applications	WB/IHC
Host/Source	Rabbit
Reactivity	Human/Rat/Mouse

PRODUCT PROPERTIES

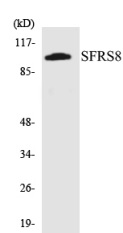
Clonality	Polyclonal
Clone ID	
Concentration	1 mg/mL
Conjugation	Unconjugated
Purification	The antibody was affinity-purified from rabbit antiserum by affinity-chromatography using epitope-specific immunogen.
Dilution Range	WB 1:500-2000 IHC-P 1:50-300
Formulation	Liquid in PBS containing 50% Glycerol, 0.5% BSA and 0.02% Sodium Azide.
Isotype	IgG
Storage	Store at -20°C for up to 1 year from the date of receipt, and avoid repeat freeze-thaw cycles.
Instruction	

TARGET INFORMATION

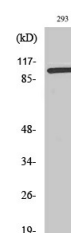
Gene ID	6433
Gene Symbol	SFSWAP
Uniprot ID	SFSWA_HUMAN
Immunogen	The antiserum was produced against synthesized peptide derived from the human SFRS8 at the amino acid range 201-250
Immunogen Region	201-250 aa
Specificity	SWAP Polyclonal Antibody detects endogenous levels of SWAP protein.
Immunogen Sequence	



Western blot analysis of SFRS8 Antibody. The lane on the right is blocked with the SFRS8 peptide.



Western blot analysis of the lysates from 293 cells using SFRS8 antibody.



Western blot analysis of various cells using SWAP Polyclonal Antibody cells nucleus extracted by Minute TM Cytoplasmic and Nuclear Fractionation kit (SC-003, Inventiotech, MN, USA).

This product is suitable for in-vitro studies under the RESEARCH USE ONLY [RUO] licence. This product must not be used as for diagnostic or other medical purposes.
St John's Laboratory Ltd, Knowledge Dock Business Centre, University Way, London, E16 2RD | Tel: 0208 223 3081