

Anti-STK36 antibody (387-436 aa) (STJ95827)

STJ95827

GENERAL INFORMATION

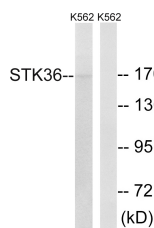
Product Type	Primary antibodies
Short Description	Rabbit polyclonal antibody anti-Serine/threonine-protein kinase 36 (387-436 aa) is suitable for use in Western Blot, Immunohistochemistry, Immunofluorescence and ELISA research applications.
Applications	WB/IHC/IF/ELISA
Host/Source	Rabbit
Reactivity	Human/Mouse

PRODUCT PROPERTIES

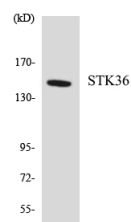
Clonality	Polyclonal
Clone ID	
Concentration	1 mg/mL
Conjugation	Unconjugated
Purification	The antibody was affinity-purified from rabbit antiserum by affinity-chromatography using epitope-specific immunogen.
Dilution Range	WB 1:500-1:2000 IHC 1:100-1:300 ELISA 1:5000 IF 1:50-200
Formulation	Liquid in PBS containing 50% Glycerol, 0.5% BSA and 0.02% Sodium Azide.
Isotype	IgG
Storage Instruction	Store at -20°C for up to 1 year from the date of receipt, and avoid repeat freeze-thaw cycles.

TARGET INFORMATION

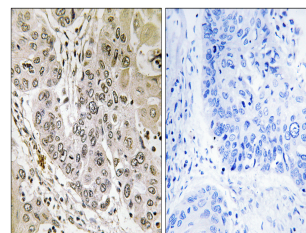
Gene ID	27148
Gene Symbol	STK36
Uniprot ID	STK36_HUMAN
Immunogen	The antiserum was produced against synthesized peptide derived from the human STK36 at the amino acid range 387-436
Immunogen Region	387-436 aa
Specificity	STK36 Polyclonal Antibody detects endogenous levels of STK36 protein.
Immunogen Sequence	



Western blot analysis of lysates from K562 cells, using STK36 Antibody. The lane on the right is blocked with the synthesized peptide.



Western blot analysis of the lysates from HepG2 cells using STK36 antibody.



Immunohistochemistry analysis of paraffin-embedded human lung carcinoma tissue, using STK36 Antibody. The picture on the right is blocked with the synthesized peptide.