

Anti-STAT6 antibody (608-657 aa) (STJ95819)

STJ95819

GENERAL INFORMATION

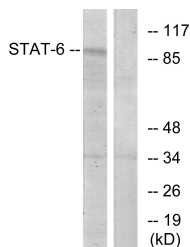
Product Type	Primary antibodies
Short Description	Rabbit polyclonal antibody anti-Signal transducer and activator of transcription 6 (608-657 aa) is suitable for use in Western Blot, Immunohistochemistry, Immunofluorescence and ELISA research applications.
Applications	WB/IHC/IF/ELISA
Host/Source	Rabbit
Reactivity	Human/Mouse/Monkey

PRODUCT PROPERTIES

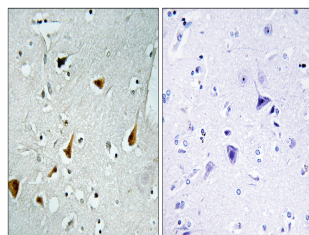
Clonality	Polyclonal
Clone ID	
Concentration	1 mg/mL
Conjugation	Unconjugated
Purification	The antibody was affinity-purified from rabbit antiserum by affinity-chromatography using epitope-specific immunogen.
Dilution	WB 1:500-1:2000
Range	IHC 1:100-1:300 ELISA 1:5000 IF 1:50-200
Formulation	Liquid in PBS containing 50% Glycerol, 0.5% BSA and 0.02% Sodium Azide.
Isotype	IgG
Storage Instruction	Store at -20°C for up to 1 year from the date of receipt, and avoid repeat freeze-thaw cycles.

TARGET INFORMATION

Gene ID	6778
Gene Symbol	STAT6
Uniprot ID	STAT6_HUMAN
Immunogen	The antiserum was produced against synthesized peptide derived from the human STAT6 at the amino acid range 608-657
Immunogen Region	608-657 aa
Specificity	Stat6 Polyclonal Antibody detects endogenous levels of Stat6 protein.
Immunogen Sequence	



Western blot analysis of lysates from HeLa cells, using STAT6 Antibody. The lane on the right is blocked with the synthesized peptide.



Immunohistochemistry analysis of paraffin-embedded human brain tissue, using STAT6 Antibody. The picture on the right is blocked with the synthesized peptide.