

Anti-STAT2 antibody (656-705 aa) (STJ95807)

STJ95807

GENERAL INFORMATION

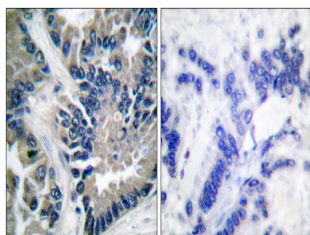
Product Type	Primary antibodies
Short Description	Rabbit polyclonal antibody anti-Signal transducer and activator of transcription 2 (656-705 aa) is suitable for use in Western Blot, Immunoprecipitation, Immunohistochemistry, Immunofluorescence and ELISA research applications.
Applications	WB/IP/IHC/IF/ELISA
Host/Source	Rabbit
Reactivity	Human/Mouse/Rat

PRODUCT PROPERTIES

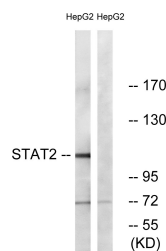
Clonality	Polyclonal
Clone ID	
Concentration	1 mg/mL
Conjugation	Unconjugated
Purification	The antibody was affinity-purified from rabbit antiserum by affinity-chromatography using epitope-specific immunogen.
Dilution	WB 1:500-1:2000
Range	IHC 1:100-1:300 ELISA 1:5000 IF 1:50-200
Formulation	Liquid in PBS containing 50% Glycerol, 0.5% BSA and 0.02% Sodium Azide.
Isotype	IgG
Storage	Store at -20°C for up to 1 year from the date of receipt, and avoid repeat freeze-thaw cycles.
Instruction	

TARGET INFORMATION

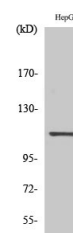
Gene ID	6773
Gene Symbol	STAT2
Uniprot ID	STAT2_HUMAN
Immunogen	The antiserum was produced against synthesized peptide derived from the human STAT2 at the amino acid range 656-705
Immunogen	656-705 aa
Region	
Specificity	Stat2 Polyclonal Antibody detects endogenous levels of Stat2 protein.
Immunogen	
Sequence	



Immunohistochemistry analysis of paraffin-embedded human lung carcinoma tissue, using STAT2 Antibody. The picture on the right is blocked with the synthesized peptide.



Western blot analysis of lysates from HepG2, using STAT2 Antibody. The lane on the right is blocked with the synthesized peptide.



Western blot analysis of various cells using Stat2 Polyclonal Antibody

This product is suitable for in-vitro studies under the RESEARCH USE ONLY [RUO] licence. This product must not be used as for diagnostic or other medical purposes.
St John's Laboratory Ltd, Knowledge Dock Business Centre, University Way, London, E16 2RD | Tel: 0208 223 3081