

Anti-STAT1 antibody (694-743 aa) (STJ95804)

STJ95804

GENERAL INFORMATION

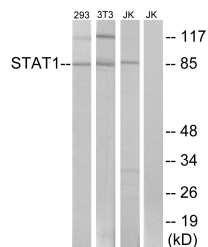
Product Type	Primary antibodies
Short Description	Rabbit polyclonal antibody anti-Signal transducer and activator of transcription 1-alpha/beta (694-743 aa) is suitable for use in Immunofluorescence, Western Blot, Immunohistochemistry, Immunoprecipitation and ELISA research applications.
Applications	IF/WB/IHC/IP/ELISA
Host/Source	Rabbit
Reactivity	Human/Mouse/Rat/Chicken

PRODUCT PROPERTIES

Clonality	Polyclonal
Clone ID	
Concentration	1 mg/mL
Conjugation	Unconjugated
Purification	The antibody was affinity-purified from rabbit antiserum by affinity-chromatography using epitope-specific immunogen.
Dilution	IF 1:50-200
Range	WB 1:500-1:2000 IHC 1:100-1:300 IP 1:200 ELISA 1:10000
Formulation	Liquid in PBS containing 50% Glycerol, 0.5% BSA and 0.02% Sodium Azide.
Isotype	IgG
Storage	Store at -20°C for up to 1 year from the date of receipt, and avoid repeat freeze-thaw cycles.
Instruction	

TARGET INFORMATION

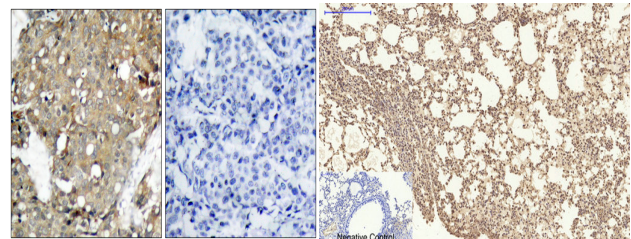
Gene ID	6772
Gene Symbol	STAT1
Uniprot ID	STAT1_HUMAN
Immunogen	The antiserum was produced against synthesized peptide derived from the human STAT1 at the amino acid range 694-743
Immunogen Region	694-743 aa
Specificity	Stat1 Polyclonal Antibody detects endogenous levels of Stat1 protein.
Immunogen Sequence	



Western blot analysis of lysates from 293/3T3/Jurkat, using STAT1 Antibody. The lane on the right is blocked with the synthesized peptide.



Western blot analysis of various cells using Stat1 Polyclonal Antibody diluted at 1/4 2000



Immunohistochemistry analysis of paraffin-embedded human breast carcinoma tissue, using STAT1 Antibody. The picture on the right is blocked with the synthesized peptide.

Immunohistochemical analysis of paraffin-embedded Mouse-lung tissue. 1. Stat1 Polyclonal Antibody was diluted at 1:200 (4°C, overnight). 2. Sodium citrate pH 6.0 was used for antibody retrieval (>98°C, 20min). 3. Secondary antibody was diluted at 1:200 (room temperature, 30min). Negative control was used by secondary antibody only.

This product is suitable for in-vitro studies under the RESEARCH USE ONLY [RUO] licence. This product must not be used as for diagnostic or other medical purposes.

St John's Laboratory Ltd, Knowledge Dock Business Centre, University Way, London, E16 2RD | Tel: 0208 223 3081