

Anti-STAM2 antibody (161-210 aa) (STJ95800)

STJ95800

GENERAL INFORMATION

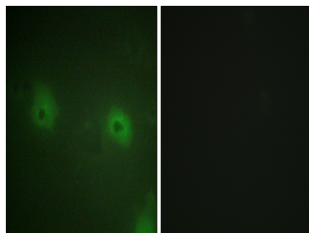
Product Type	Primary antibodies
Short Description	Rabbit polyclonal antibody anti-Signal transducing adapter molecule 2 (161-210 aa) is suitable for use in Western Blot, Immunohistochemistry, Immunofluorescence and ELISA research applications.
Applications	WB/IHC/IF/ELISA
Host/Source	Rabbit
Reactivity	Human/Mouse

PRODUCT PROPERTIES

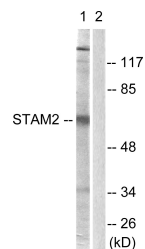
Clonality	Polyclonal
Clone ID	
Concentration	1 mg/mL
Conjugation	Unconjugated
Purification	The antibody was affinity-purified from rabbit antiserum by affinity-chromatography using epitope-specific immunogen.
Dilution	WB 1:500-1:2000
Range	IHC 1:100-1:300 IF 1:200-1:1000 ELISA 1:40000
Formulation	Liquid in PBS containing 50% Glycerol, 0.5% BSA and 0.02% Sodium Azide.
Isotype	IgG
Storage Instruction	Store at -20°C for up to 1 year from the date of receipt, and avoid repeat freeze-thaw cycles.

TARGET INFORMATION

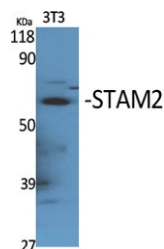
Gene ID	10254
Gene Symbol	STAM2
Uniprot ID	STAM2_HUMAN
Immunogen	The antiserum was produced against synthesized peptide derived from the human STAM2 at the amino acid range 161-210
Immunogen Region	161-210 aa
Specificity	STAM2 Polyclonal Antibody detects endogenous levels of STAM2 protein.
Immunogen Sequence	



Immunofluorescence analysis of HUVEC cells, using STAM2 Antibody. The picture on the right is blocked with the synthesized peptide.



Western blot analysis of lysates from NIH/3T3 cells, treated with EGF 200ng/ml 30', using STAM2 Antibody. The lane on the right is blocked with the synthesized peptide.



Western blot analysis of various cells using STAM2 Polyclonal Antibody