

Anti-SRSF4 antibody (111-160 aa) (STJ95786)

STJ95786

GENERAL INFORMATION

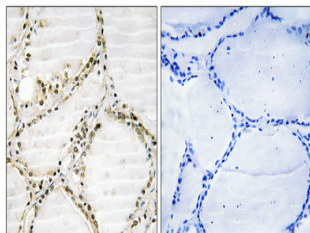
Product Type	Primary antibodies
Short Description	Rabbit polyclonal antibody anti-Serine/arginine-rich splicing factor 4 (111-160 aa) is suitable for use in Western Blot, Immunohistochemistry, Immunofluorescence and ELISA research applications.
Applications	WB/IHC/IF/ELISA
Host/Source	Rabbit
Reactivity	Human/Mouse

PRODUCT PROPERTIES

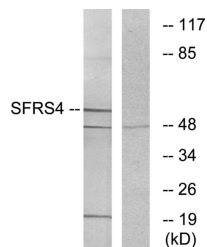
Clonality	Polyclonal
Clone ID	
Concentration	1 mg/mL
Conjugation	Unconjugated
Purification	The antibody was affinity-purified from rabbit antiserum by affinity-chromatography using epitope-specific immunogen.
Dilution Range	WB 1:500-1:2000 IHC 1:100-1:300 ELISA 1:20000 IF 1:50-200
Formulation	Liquid in PBS containing 50% Glycerol, 0.5% BSA and 0.02% Sodium Azide.
Isotype	IgG
Storage	Store at -20°C for up to 1 year from the date of receipt, and avoid repeat freeze-thaw cycles.
Instruction	

TARGET INFORMATION

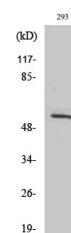
Gene ID	6429
Gene Symbol	SRSF4
Uniprot ID	SRSF4_HUMAN
Immunogen	The antiserum was produced against synthesized peptide derived from the human SFRS4 at the amino acid range 111-160
Immunogen	111-160 aa
Region	
Specificity	SRp75 Polyclonal Antibody detects endogenous levels of SRp75 protein.
Immunogen	
Sequence	



Immunohistochemical analysis of paraffin-embedded Human thyroid gland. Antibody was diluted at 1:100 (4A°C overnight). High-pressure and temperature Tris-EDTA, pH8.0 was used for antigen retrieval. Negative control (right) obtained from antibody was pre-absorbed by immunogen peptide.



Western blot analysis of lysates from LOVO cells, using SFRS4 Antibody. The lane on the right is blocked with the synthesized peptide.



Western blot analysis of various cells using SRp75 Polyclonal Antibody diluted at 1:1000 cells nucleus extracted by Minute TM Cytoplasmic and Nuclear Fractionation kit (SC-003, Inventiotech, MN, USA).