

## Anti-ZSCAN26 antibody (51-100 aa) (STJ95778)

STJ95778

### GENERAL INFORMATION

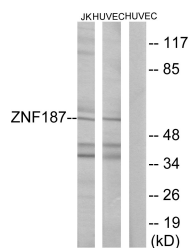
<b>Product Type</b>	Primary antibodies
<b>Short Description</b>	Rabbit polyclonal antibody anti-Zinc finger and SCAN domain-containing protein 26 (51-100 aa) is suitable for use in Western Blot, Immunofluorescence and ELISA research applications.
<b>Applications</b>	WB/IF/ELISA
<b>Host/Source</b>	Rabbit
<b>Reactivity</b>	Human/Rat/Mouse

### PRODUCT PROPERTIES

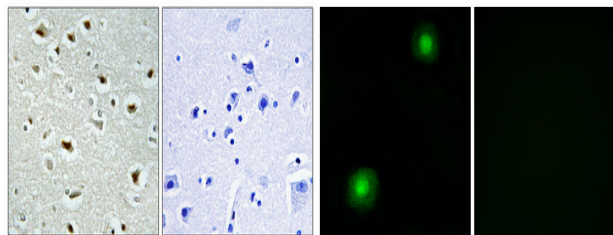
<b>Clonality</b>	Polyclonal
<b>Clone ID</b>	
<b>Concentration</b>	1 mg/mL
<b>Conjugation</b>	Unconjugated
<b>Purification</b>	The antibody was affinity-purified from rabbit antiserum by affinity-chromatography using epitope-specific immunogen.
<b>Dilution Range</b>	WB 1:500-1:2000 IF 1:200-1:1000 ELISA 1:5000
<b>Formulation</b>	Liquid in PBS containing 50% Glycerol, 0.5% BSA and 0.02% Sodium Azide.
<b>Isotype</b>	IgG
<b>Storage Instruction</b>	Store at -20°C for up to 1 year from the date of receipt, and avoid repeat freeze-thaw cycles.

### TARGET INFORMATION

<b>Gene ID</b>	7741
<b>Gene Symbol</b>	ZSCAN26
<b>Uniprot ID</b>	ZSCAN26_HUMAN
<b>Immunogen</b>	The antiserum was produced against synthesized peptide derived from the human ZNF187 at the amino acid range 51-100
<b>Immunogen Region</b>	51-100 aa
<b>Specificity</b>	SRE-ZBP Polyclonal Antibody detects endogenous levels of SRE-ZBP protein.
<b>Immunogen Sequence</b>	

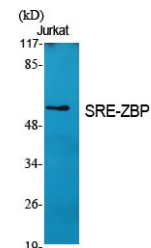


Western blot analysis of lysates from Jurkat and HUVEC cells, using ZNF187 Antibody. The lane on the right is blocked with the synthesized peptide.



Immunohistochemical analysis of paraffin-embedded Human brain. Antibody was diluted at 1:100 (4A°C overnight). High-pressure and temperature Tris-EDTA, pH8.0 was used for antigen retrieval. Negative control (right) obtained from antibody was pre-absorbed by immunogen peptide.

Immunofluorescence analysis of A549 cells, using ZNF187 Antibody. The picture on the right is blocked with the synthesized peptide.



Western blot analysis of various cells using SRE-ZBP Polyclonal Antibody cells nucleus extracted by Minute TM Cytoplasmic and Nuclear Fractionation kit (SC-003, Inventiotech, MN, USA).